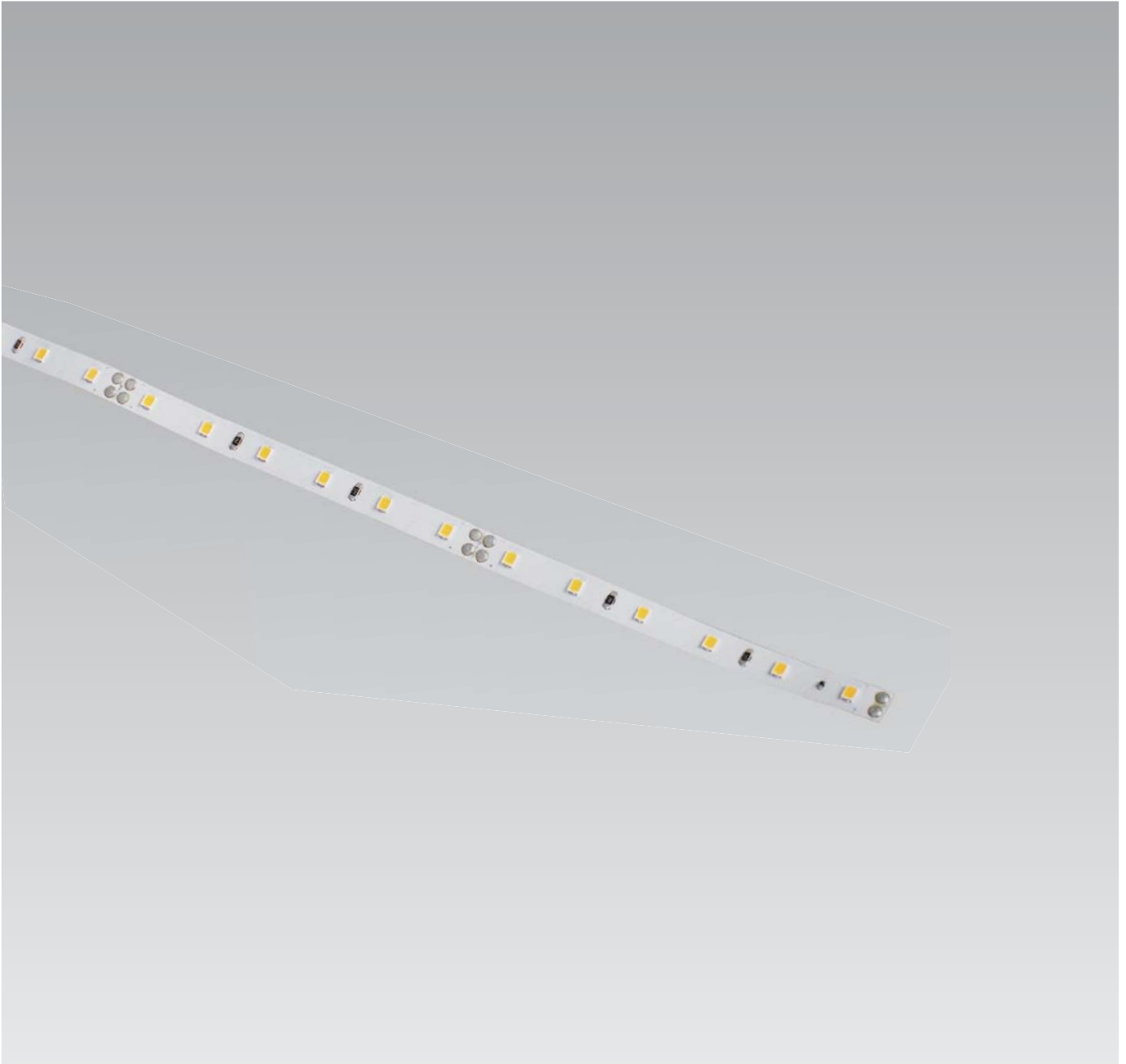


Flexible Strip Lighting

FLEX



Flexible Strip Lighting

FLEX



Flexible Strip Lighting

FLEX

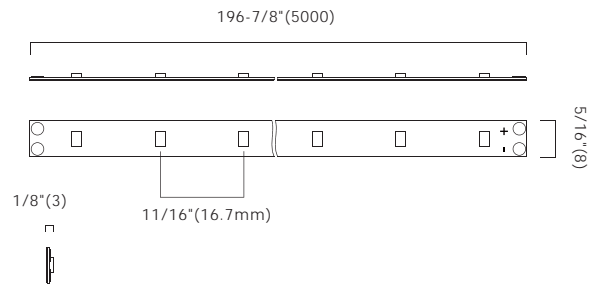


- Plug & play (External power supply)
- Customized design length
- Flexible and compact design
- Low profile needs less hardware
- Linkable, max.linkable length:48'
- Lifetime: 50,000hrs (ta=95°F, 35°C)
- Ta: -4°F-95°F (-20°C-35°C)
- 1W/ft, 110 lm/ft(@4000K)



Dimensions: (inches/mm)

Minimum Cuttable Length:3-15/16"(100mm)



How to order using our catalog numbers:

Example: FLEX-19730K120WAT

Series		Length	Color Temp	Beam Angle	Finish	Installation
FLEX	-	197 - 196.8" (5000)	30K - 3000K 40K - 4000K	120-120°	W - White	AT - Adhesive Tape

Catalog No.	Model	Description					Max. Pcs Per LED Power Supply 30W (NA159-3024FA-4A6)
		Rated Input	Ra	Wattage	Luminous Flux	Included	
FLEX-19730K120WAT	FLEX-F300-24V-K	24VDC	85	18W	1722 lm	1pc LED fixture with double-sided adhesive tape	1pc
FLEX-19740K120WAT					1800 lm		

How to choose your driver & cables:





Catalog No.	Description	Photo
IC-RB-59	Input cable 59" (must be between the light and splitter)	
EC-CV-59	Extension cable 59" (used as input cable or soft connector)	
NA159-3024FA-6V6	Model: SLT30-24VF-A Matching driver, max. 30W. Input: 100-120VAC NA plug 1 + 59" cable. Output: 24VDC, JB-6-3 + 6" cable.	

*Note: For alternative driver configurations, please contact our sales department.

Flexible Strip Lighting

FLEX

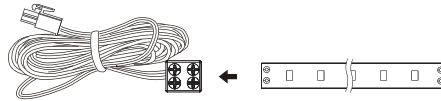
Optional:

Catalog No.	Description	Photo
SC-RB-2	Soft connector 2"	
SC-RB-12	Soft connector 12"	
HC-RB	Hard connector	
MCN-RB	Mounting channel with cover 69"	
MC45-RB	Mounting clips 45°	

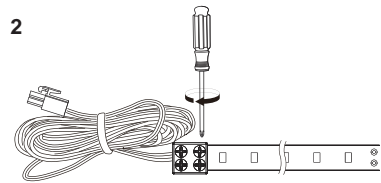
Installation

Install LED fixtures directly

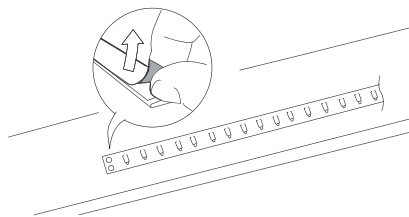
1



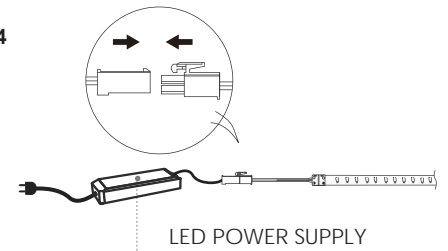
2



3

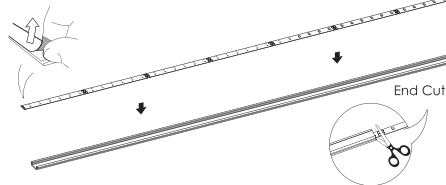


4



Mounting channel installation

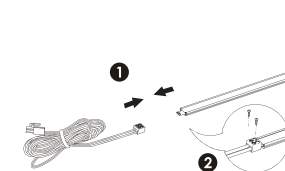
1



2



3



4

