


# INSTRUCTION MANUAL

## SERIES: ACCENT

Read these instructions completely and carefully.

 **ATTENTIONS**

**WARNING/AVERTISSEMENT**  
**RISK OF ELECTRIC SHOCK**

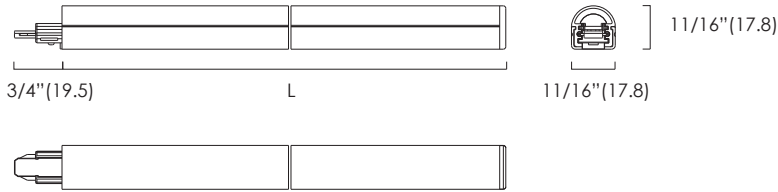
- Turn power off before inspection, installation or removal.
- Properly ground electrical enclosure.

**RISK OF FIRE**

- Follow all NEC and local codes.
- Use only UL or IEC approved wire for input/output connections.
- Minimum size 18 AWG.

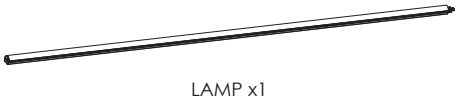
**THIS PRODUCT MUST BE INSTALLED IN ACCORDANCE WITH THE APPLICABLE INSTALLATION CODE BY A PERSON FAMILIAR WITH THE CONSTRUCTION AND OPERATION OF THE PRODUCT AND THE HAZARDS INVOLVED**

### Dimensions: (Inches/mm)

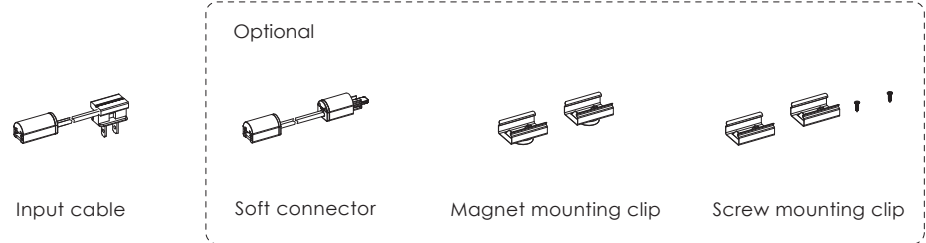


### Specifications :

Model	Power (W)	Length	Input (Vac)	Ta	Minimum Mounting Space(LXWXH)	Max.linkable (Pcs)
ACCENT-L44-120V	4	10-7/16" (265mm)	120	-4°F~-95°F (-20°C~-35°C)	12-3/6"×11-13/16"×11-13/16" (310×300×300)	60
ACCENT-L88-120V	8	21-9/16" (540mm)	120		23"×11-13/16"×11-13/16" (585×300×300)	30
ACCENT-L132-120V	12	31-7/8" (810mm)	120		35"×11-13/16"×11-13/16" (889×300×300)	20
ACCENT-L176-120V	16	43-3/4" (1111.5mm)	120		45-1/2"×11-13/16"×11-13/16" (1156×300×300)	15



### Accessories:

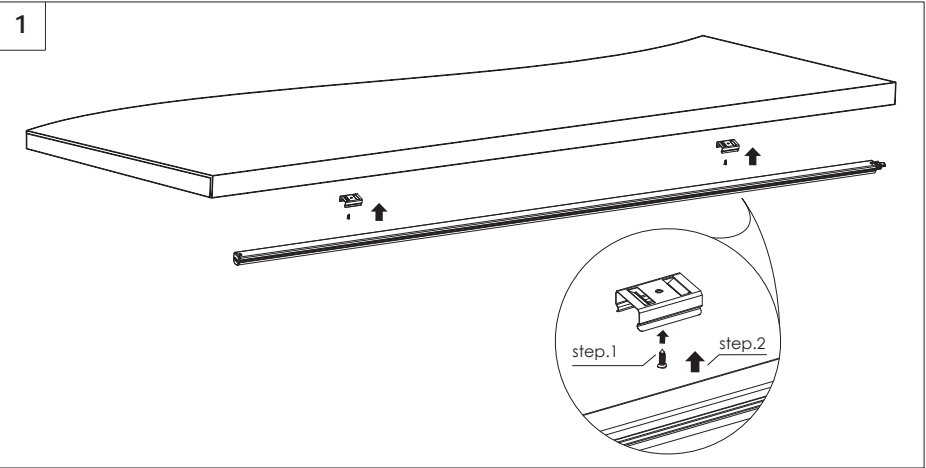


### Tools:

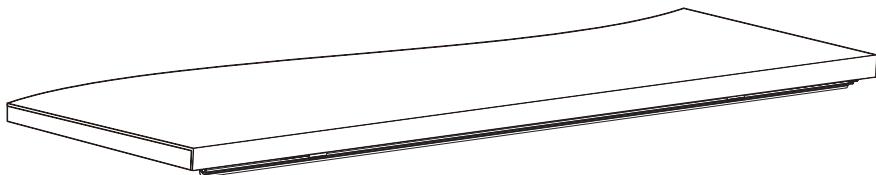


### Mounting clip installation:

#### Screw mounting

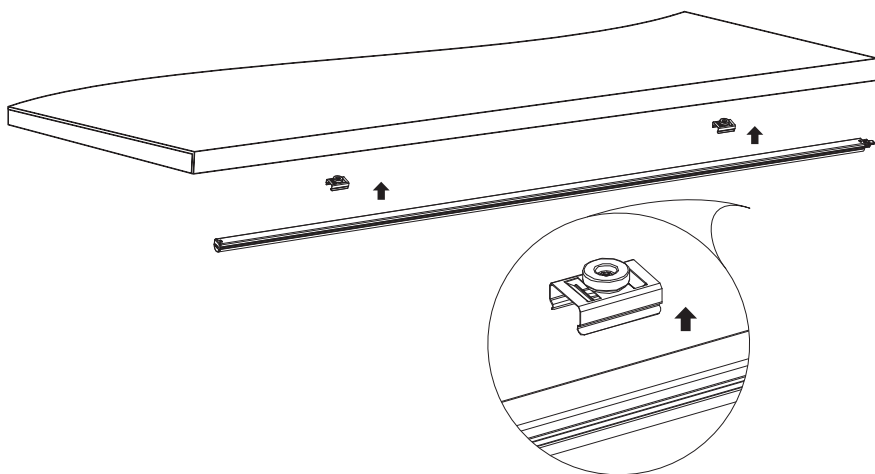


2

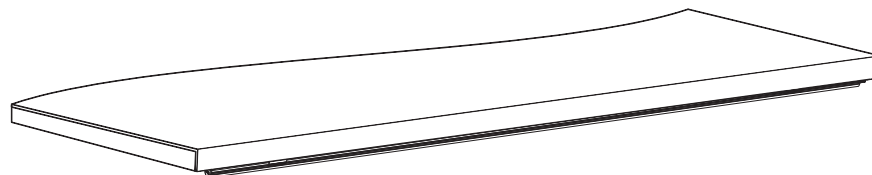


Magnet mounting clip Installation (For Iron Board)

1

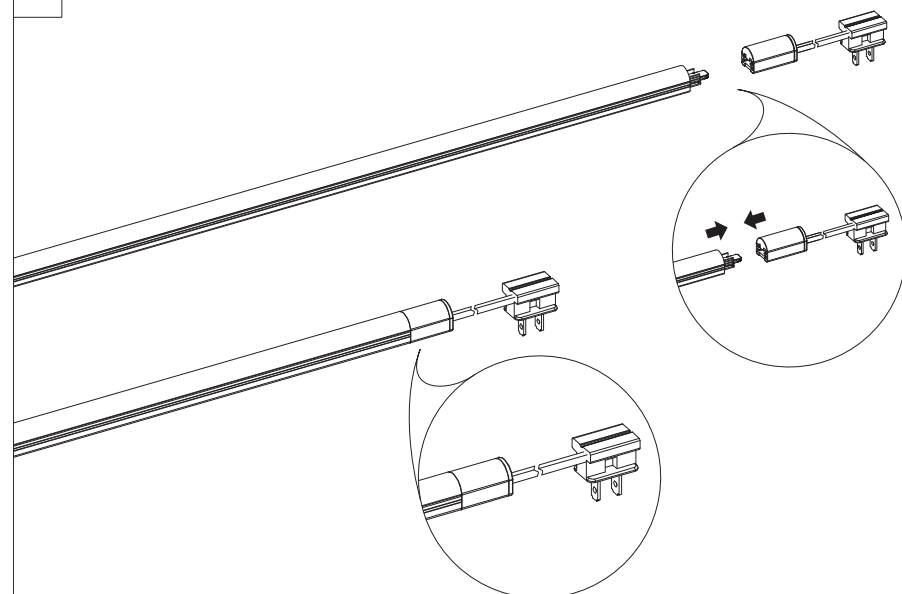


2



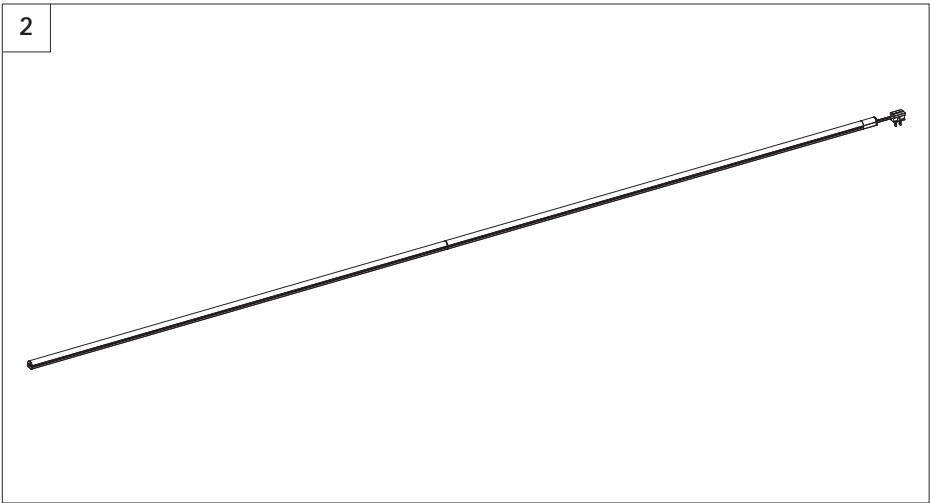
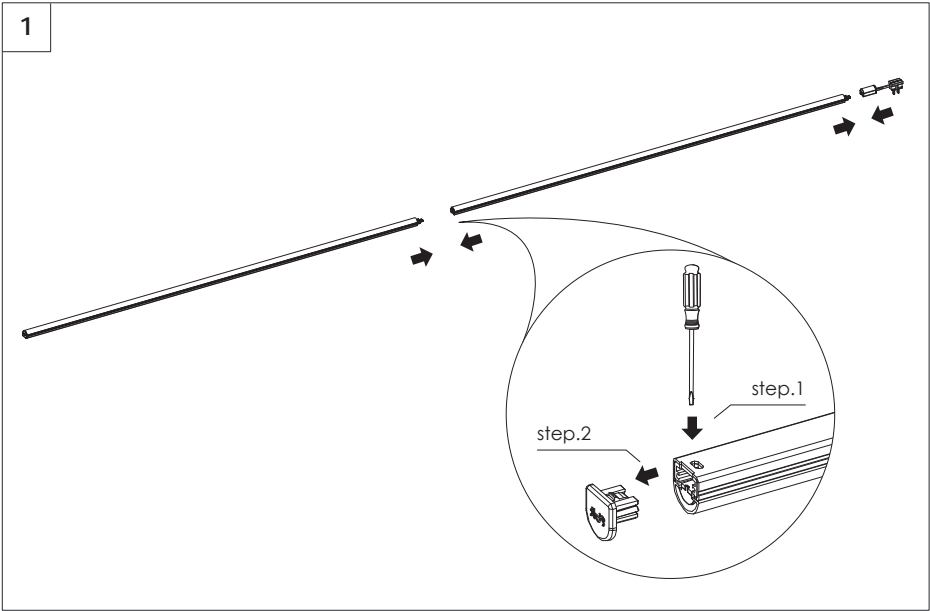
Application method:  
Use by itself

1



Use by connection:

Connection method 1 :



Connection method 2:

