

## SLPU-2P1U1C1S-WL-BK



### ELECTRICAL

2 × TR AC Receptacle, rated 15A, 125Vac  
1x USB-A (Rated 5Vdc, 3.1A)  
1x USB-TYPE C port  
(Rated 5Vdc, 3.1A 9Vdc, 2A / 12Vdc, 1.5A)  
Wireless 3-way switching, controls the rear receptacle for LED light fixtures.  
10' AC cord & plug (flat plug standard)  
8" rear/side exiting cord with receptacle.



### MECHANICAL

Recessed mounting



### CERTIFICATION

FCC compliant and UL Listed

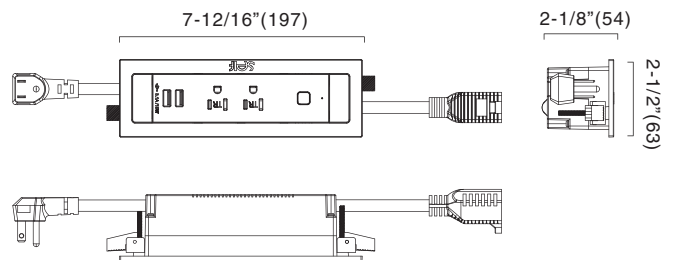


### WARRANTY

5 Years

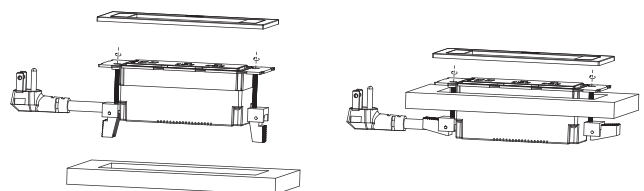


### Dimension(inches/mm)



### Installation

Cut hole size:  
7.40"×2.09"(188mm×53mm)



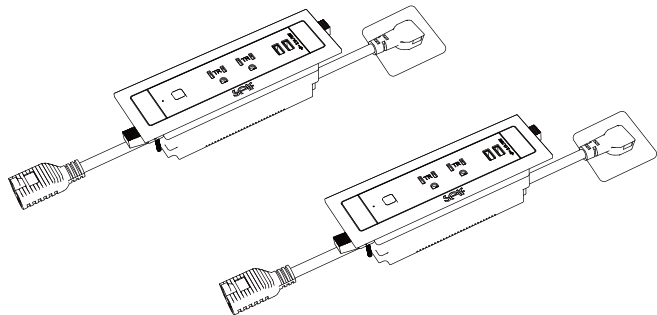
## 3-way Switching Function

(for SLPU-2P1U1C1S-WL-NI/SLPU-2P1U1C1S-WL-WH/SLPU-2P1U1C1S-WL-BK ONLY)

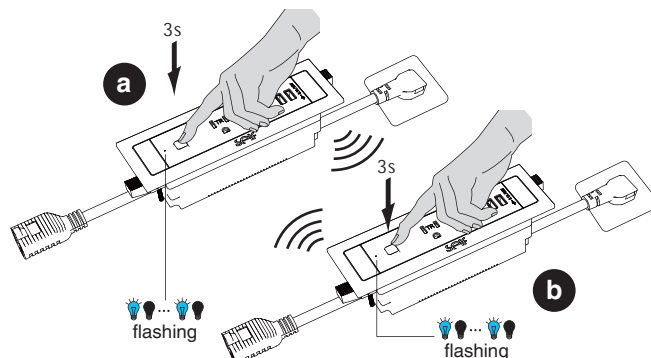


### **i** Pairing

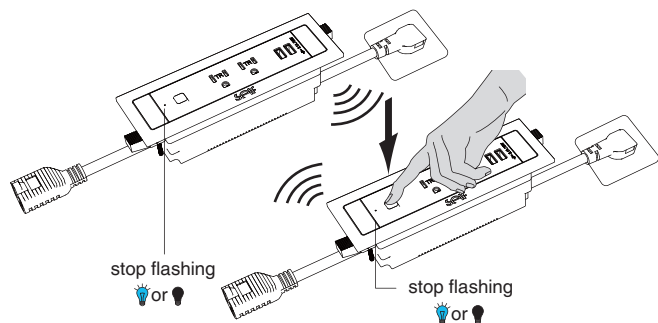
**1** Power on



**2** Press power unit's start button more than 3 seconds, the blue indicator beside button starts flashing, Power unit enters pairing mode. Repeat same operation to another power unit.



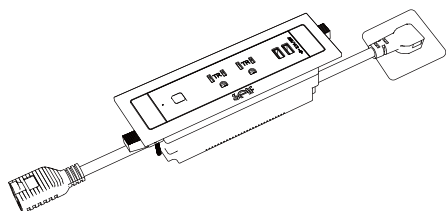
**3** Short press the button of any power unit, the blue indicator will stop flashing and stay ON or OFF, means the pairing is successful.



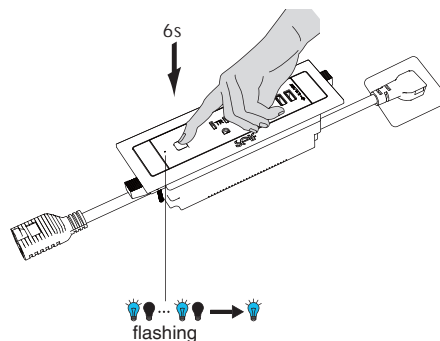
**4** press any paired power unit's switch, all the lights that powered by paired power units can be controlled.

### **i** Unpair for 3-way version power units

**1** Power on



**2** Press power unit's start button more than 6 seconds, until the blue indicator button starts flashing then stays ON, means the unpairing is successful.



## SLPU-2P1U1C1S-WL-WH



### ELECTRICAL

2 × TR AC Receptacle, rated 15A, 125Vac  
1x USB-A (Rated 5Vdc, 3.1A)  
1x USB-TYPE C port  
(Rated 5Vdc, 3.1A 9Vdc, 2A / 12Vdc, 1.5A)  
Wireless 3-way switching, controls the rear  
receptacle for LED light fixtures.  
10' AC cord & plug (flat plug standard)  
8" rear/side exiting cord with receptacle.



### MECHANICAL

Recessed mounting



### CERTIFICATION

FCC compliant and UL Listed

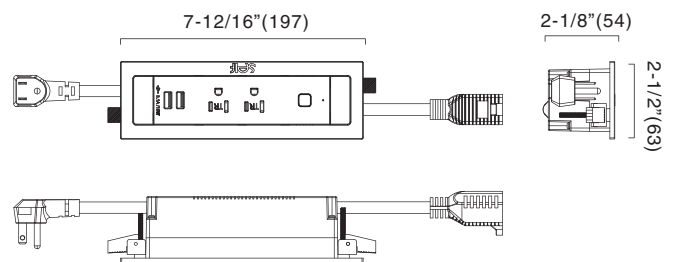


### WARRANTY

5 Years

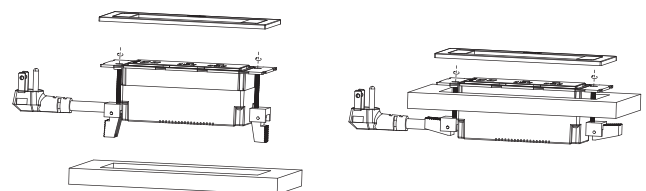


### Dimension(inches/mm)



### Installation

Cut hole size:  
7.40"×2.09"(188mm×53mm)



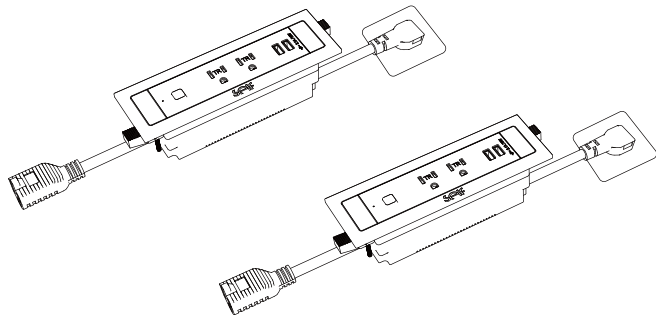
## 3-way Switching Function

(for SLPU-2P1U1C1S-WL-NI/SLPU-2P1U1C1S-WL-WH/SLPU-2P1U1C1S-WL-BK ONLY)

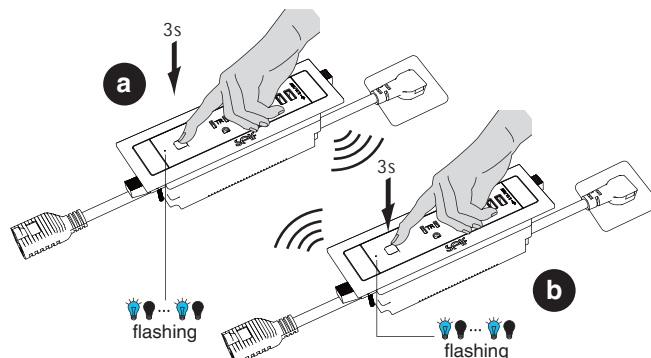


### **i** Pairing

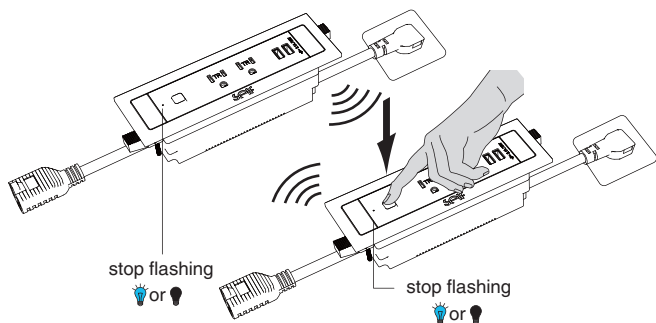
**1** Power on



**2** Press power unit's start button more than 3 seconds, the blue indicator beside button starts flashing, Power unit enters pairing mode. Repeat same operation to another power unit.



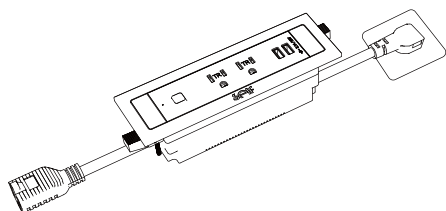
**3** Short press the button of any power unit, the blue indicator will stop flashing and stay ON or OFF, means the pairing is successful.



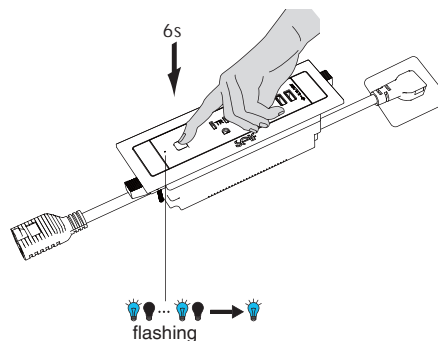
**4** press any paired power unit's switch, all the lights that powered by paired power units can be controlled.

### **i** Unpair for 3-way version power units

**1** Power on



**2** Press power unit's start button more than 6 seconds, until the blue indicator button starts flashing then stays ON, means the unpairing is successful.



## SLPU-2P1U1C1S-WL-NI



### ELECTRICAL

2 × TR AC Receptacle, rated 15A, 125Vac  
1x USB-A (Rated 5Vdc, 3.1A)  
1x USB-TYPE C port  
(Rated 5Vdc, 3.1A 9Vdc, 2A / 12Vdc, 1.5A)  
Wireless 3-way switching, controls the rear receptacle for LED light fixtures.  
10' AC cord & plug (flat plug standard)  
8" rear/side exiting cord with receptacle.



### MECHANICAL

Recessed mounting



### CERTIFICATION

FCC compliant and UL Listed

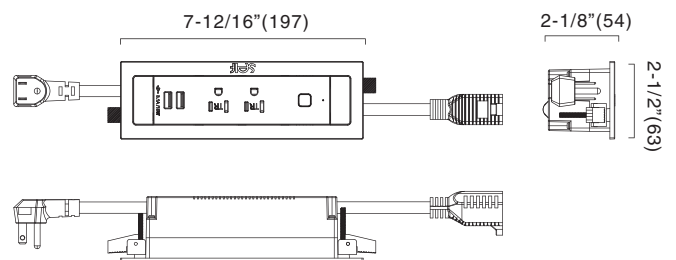


### WARRANTY

5 Years

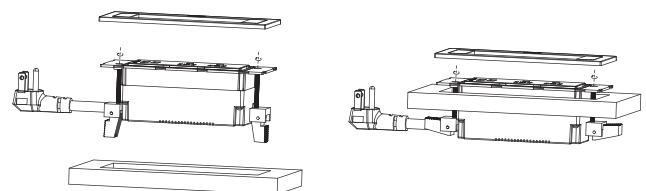


### Dimension(inches/mm)



### Installation

Cut hole size:  
7.40"×2.09"(188mm×53mm)



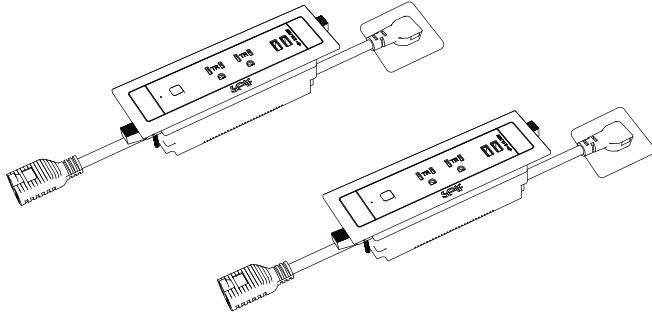
## 3-way Switching Function

(for SLPU-2P1U1C1S-WL-NI/SLPU-2P1U1C1S-WL-WH/SLPU-2P1U1C1S-WL-BK ONLY)

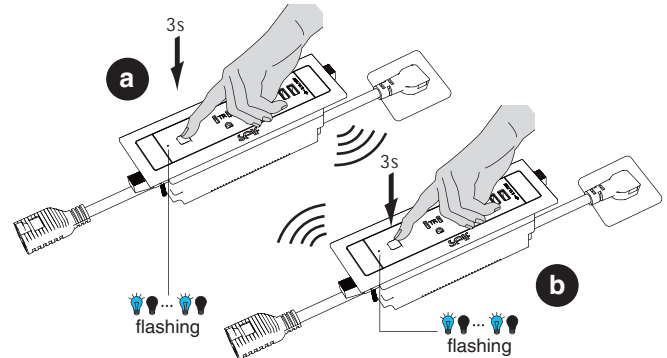


### **i** Pairing

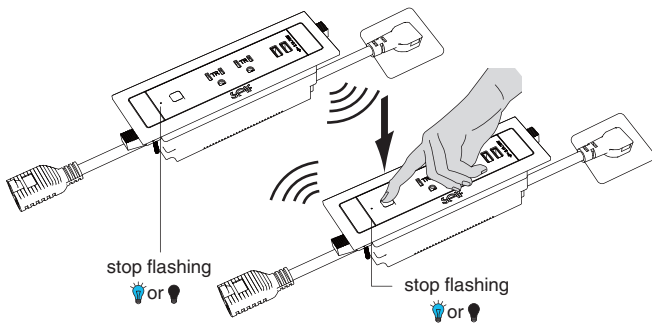
**1** Power on



**2** Press power unit's start button more than 3 seconds, the blue indicator beside button starts flashing, Power unit enters pairing mode. Repeat same operation to another power unit.



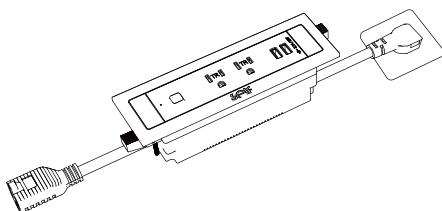
**3** Short press the button of any power unit, the blue indicator will stop flashing and stay ON or OFF, means the pairing is successful.



**4** press any paired power unit's switch, all the lights that powered by paired power units can be controlled.

### **i** Unpair for 3-way version power units

**1** Power on



**2** Press power unit's start button more than 6 seconds, until the blue indicator button starts flashing then stays ON, means the unpairing is successful.

