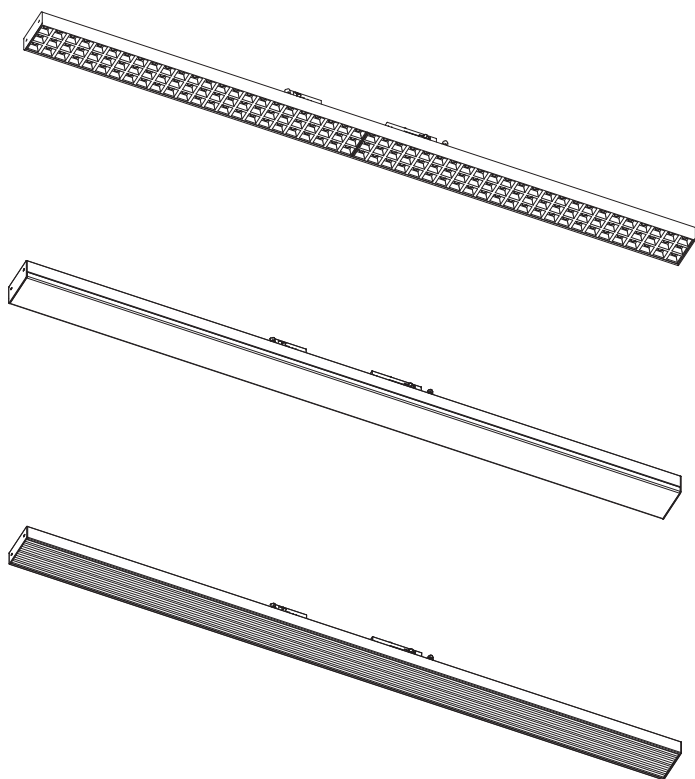


EVEREST



SAIF

Instruction Manual

Series: EVEREST

Read these instructions completely and carefully.

ATTENTIONS

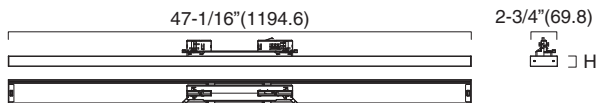
- Read the instruction carefully before installation, non-observance of this instruction may cause damage to the fixture or hurt to human body. The installation must be carried out by a qualified electrician in accordance with local or national codes.
- Cut off the power supply before installation and maintenance !
- Cut off the power supply before the electric wire connection for product first test.
- Regularly check the light source , the LED power supply, the cord and other accessories.
- If any part is damaged, the product should not be used.
- Keep this instruction manual handy for future use.
- The light source of these products are non-changeable light diodes(LED).
- Do not disassemble the product, as the light diode can cause damage to the eyes.
- Use only in indoor,dry location.Clean the product with a dry cloth.
- For USA market, specific Track model is required.
- Manufacturer's Name Series Number of The Track: Dong Guan Tian Sheng Optic-tronics Corp.
- The luminaire shall be mounted out of arm's reach. The recommended installation height shall be at least 2,5 meter (above the ground).
- The insulation of DALI control terminal and power supply terminal conforms to Basic Insulation Level.

Lesen Sie diese Anweisungen vollständig und sorgfältig durch.

ACHTUNG

- Lesen Sie die Anweisungen sorgfältig vor der Installation durch. Bei Nichtbeachtung dieser Anweisung kann Schäden am Produkt oder Verletzungen am menschlichen Körper verursachen. Die Installation muss von einem qualifizierten Elektriker gemäß örtlichen oder nationalen Vorschriften durchgeführt werden.
- Schalten Sie die Stromversorgung vor der Installation und Wartung aus!
- Schalten Sie die Stromversorgung vor dem elektrischen Anschluss des Produkts für den ersten Test aus.
- Überprüfen Sie regelmäßig die Lichtquelle, das LED-Netzteil, das Kabel und andere Zubehörteile. Wenn ein Teil beschädigt ist, sollte das Produkt nicht verwendet werden.
- Bewahren Sie diese Bedienungsanleitung für zukünftige Verwendung auf.

Dimensions: (inch/mm)

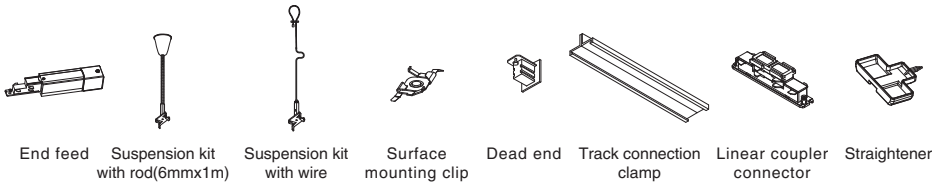


Model	Rated input	Height(H)	Power	Length
EVEREST MO-L1200-277V-DFL	120-277VAC	26.8mm (1-1/16")	40W	47-1/16" (1194.6mm)
EVEREST MO-L1200-277V-DM	120-277VAC	39mm (1-9/16")	40W	
EVEREST LO-L1200-277V-DR	120-277VAC	26.8mm (1-1/16")	30W	
EVEREST MO-L1200-277V-DFL-EM	120-277VAC	26.8mm (1-1/16")	42W	47-1/16" (1194.6mm)
EVEREST MO-L1200-277V-DM-EM	120-277VAC	39mm (1-9/16")	42W	
EVEREST LO-L1200-277V-DR-EM	120-277VAC	26.8mm (1-1/16")	33W	

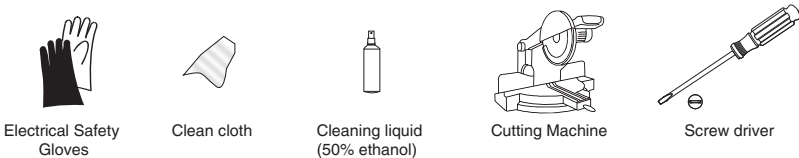
FOR fixtures(PROVIDED WITH A FACTORY INSTALLED EMERGENCY LIGHTING BATTERY PACK) :

- Battery: Rechargeable LiFePO4 6.4V,min 90-minute emergency illumination
- Battery charge time: 24hours
- Emergency output: Constant power 5W
- Test Button: press<2s(emergency function testing)
- LED ON(battery charging)
- LED OFF(battery no charging)

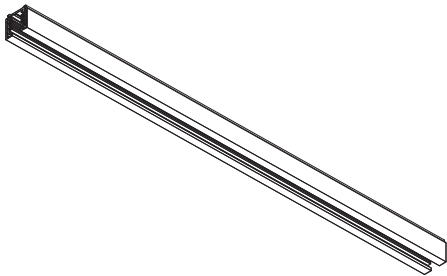
Accessories:



Tools



① Track Installation

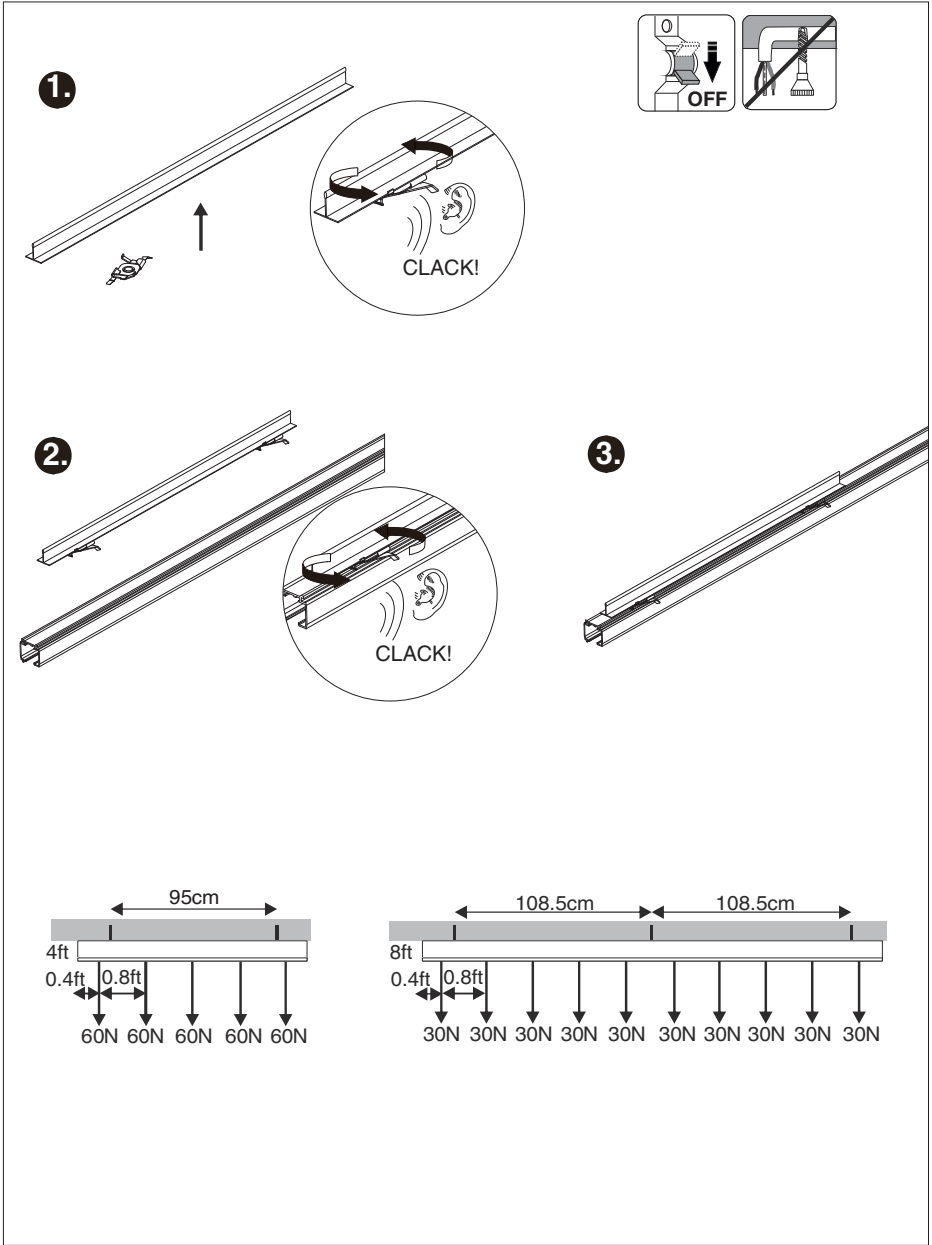


The following track system is recommended, for other brands, further application need to be tested, please contact our technicians.

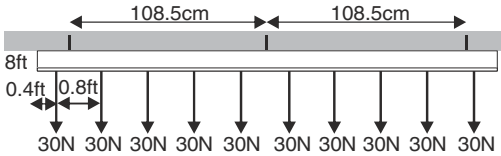
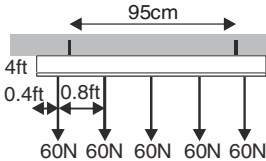
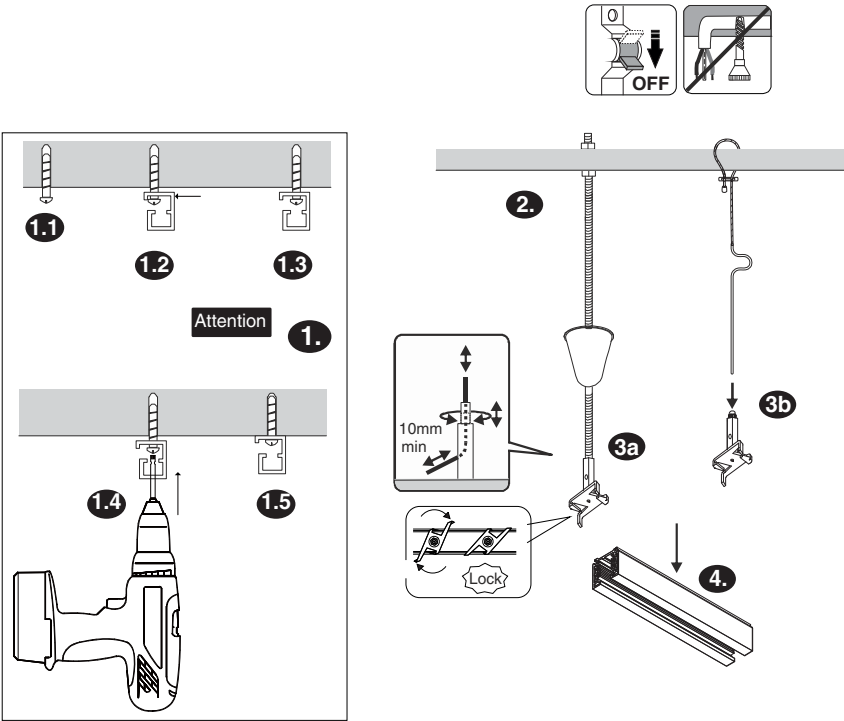
Model	TRACK BRAND	TRACK MODEL NUMBER
EVEREST MO-L1200-277V-DFL EVEREST MO-L1200-277V-DM EVEREST LO-L1200-277V-DR EVEREST MO-L1200-277V-DFL-EM EVEREST MO-L1200-277V-DM-EM EVEREST LO-L1200-277V-DR-EM	GLOBAL	XTSC-6 SERIES
	POWER GEAR	PRO-06 SERIES

* Track upgrade may affect the installation of EVEREST, subject to the actual assembly.

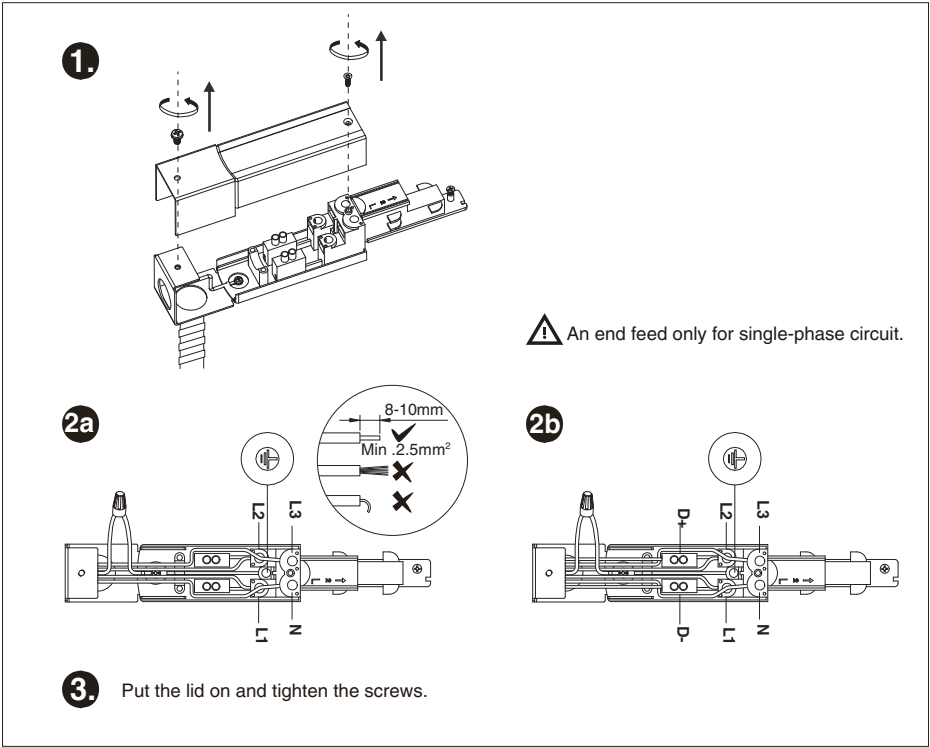
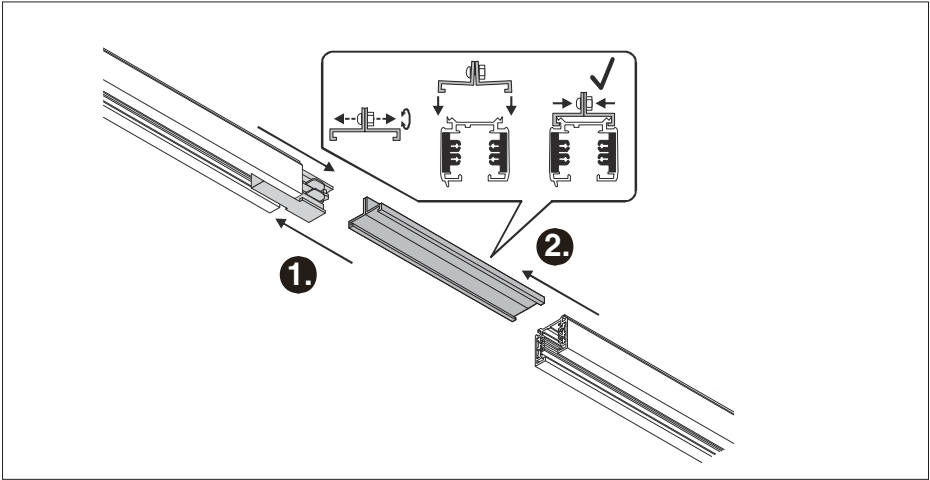
Surface mounting Installation

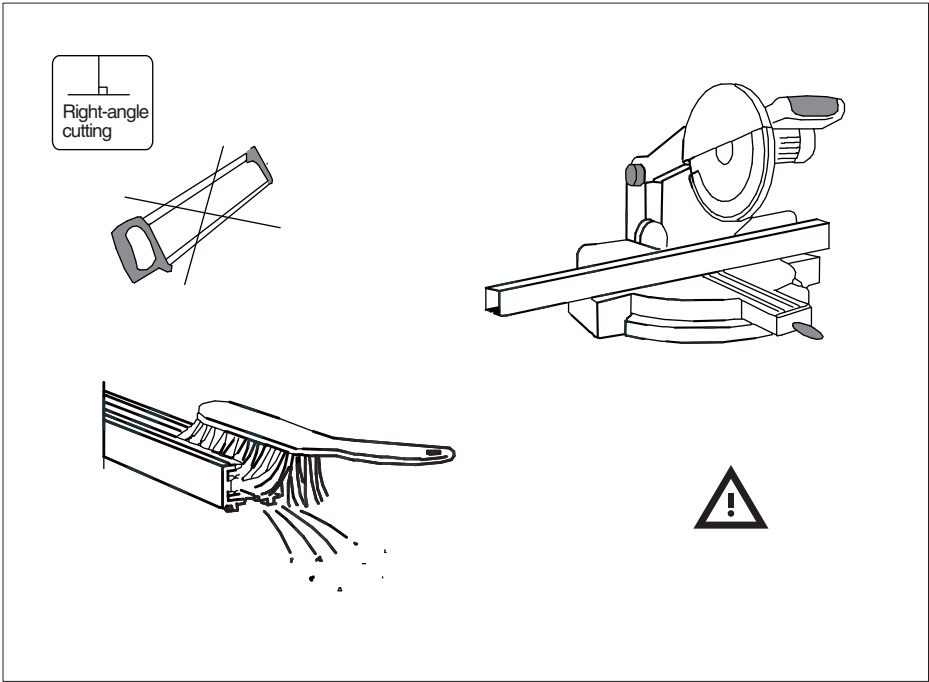
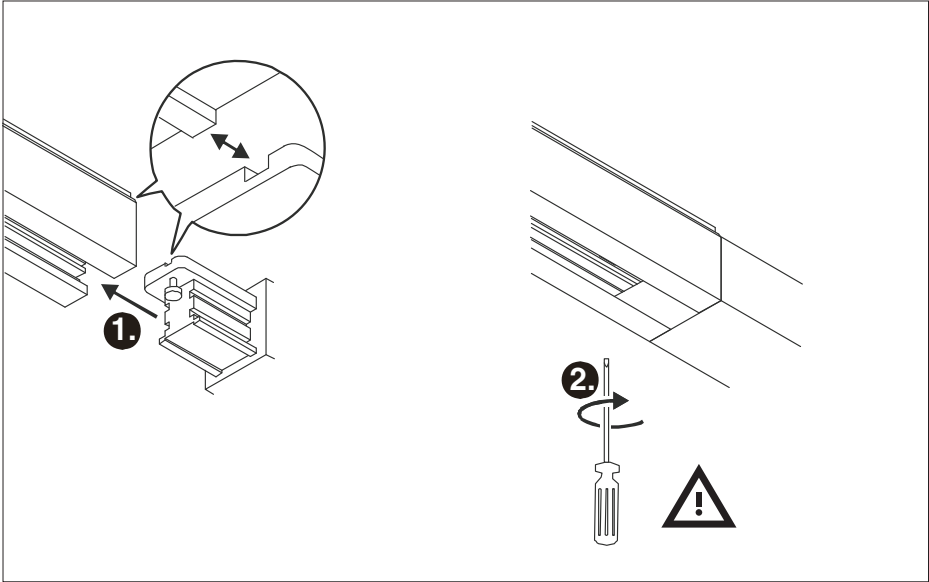


Pendant mounting Installation

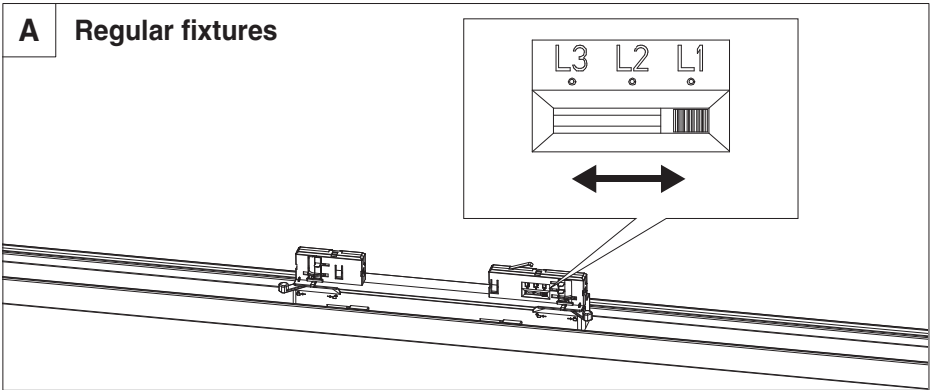
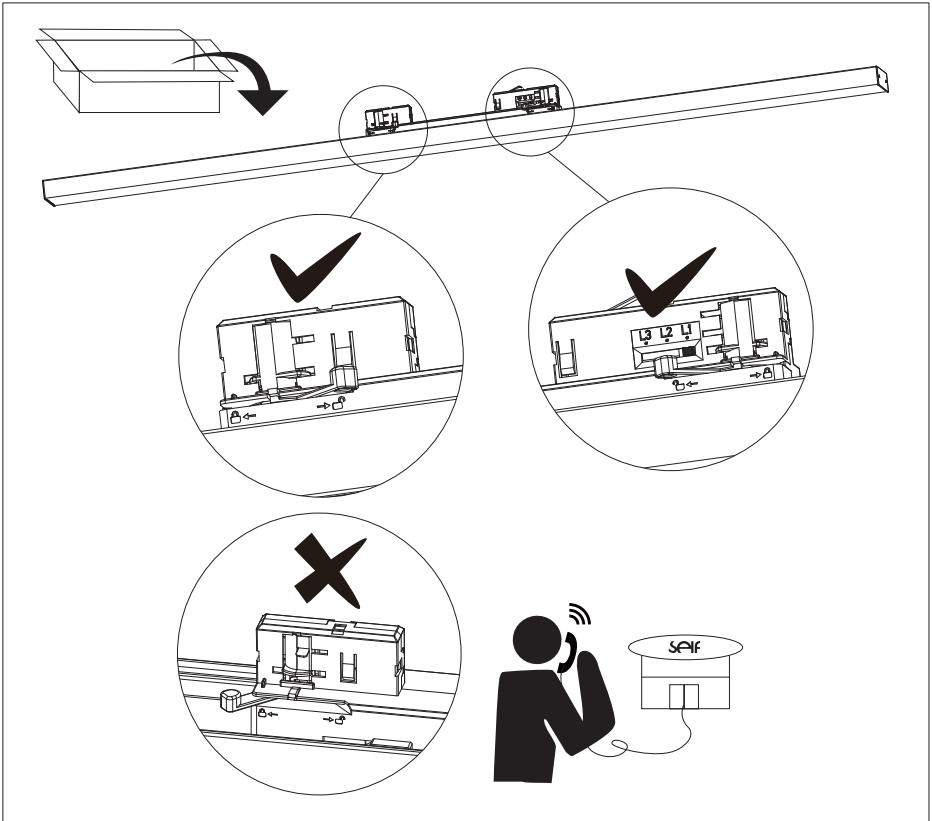


Pendant mounting Installation





① Luminaire Installation



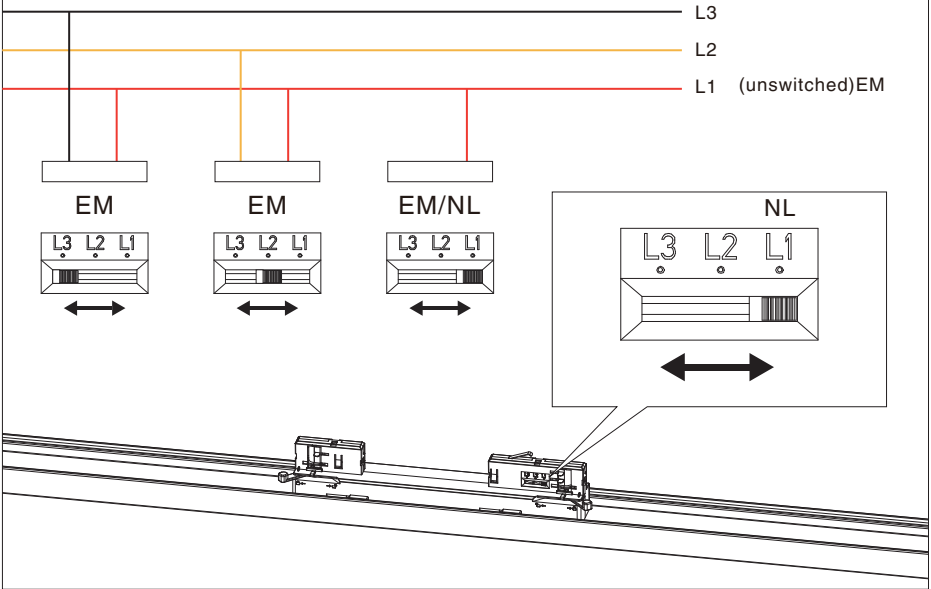
B

Fixtures

(PROVIDED WITH A FACTORY INSTALLED EMERGENCY LIGHTING BATTERY PACK)

WHEN DIP TO L2 OR L3: EM FIXTURES MAY BE TURNED ON/OFF.

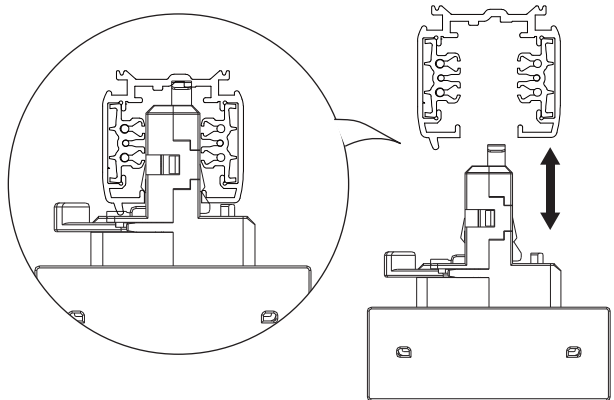
WHEN DIP TO L1: EM/NL FIXTURES WIRED FOR 24/7 ILLUMINATION.



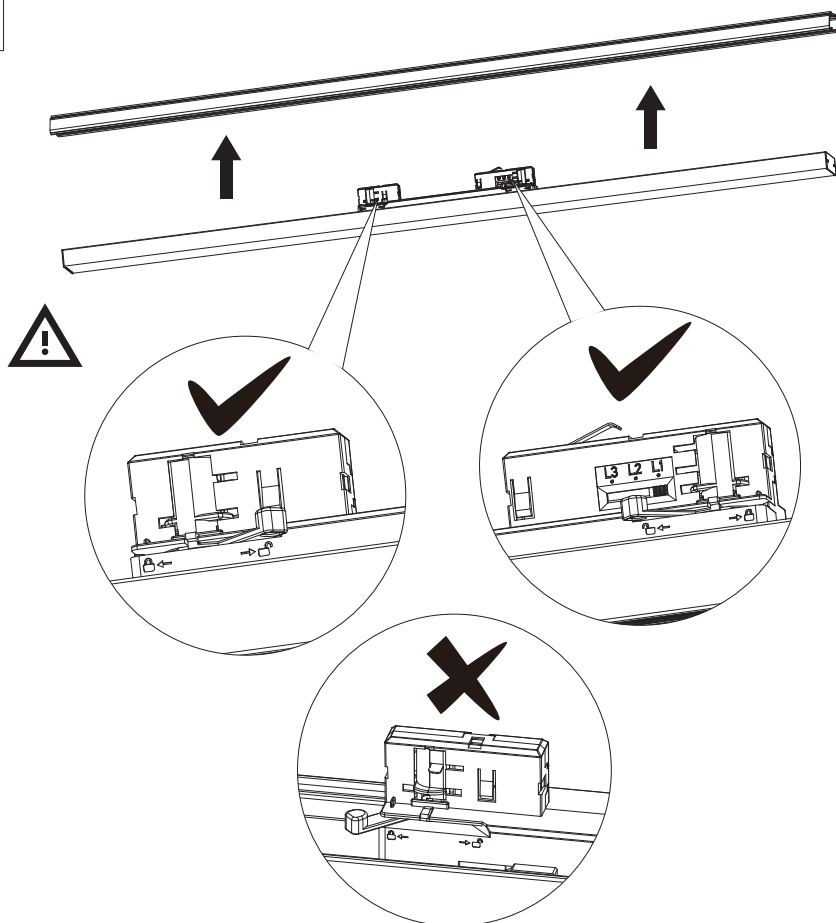
i

Installation

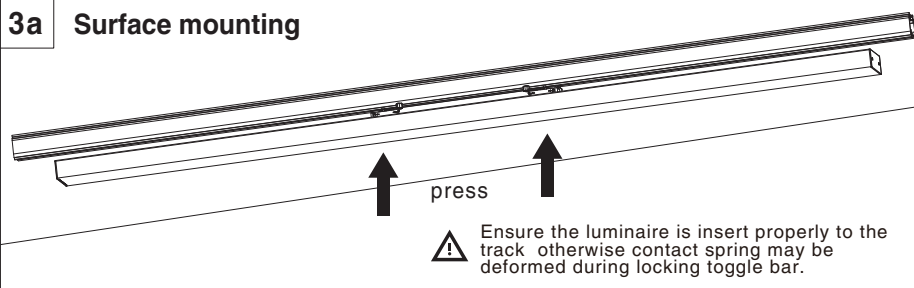
1



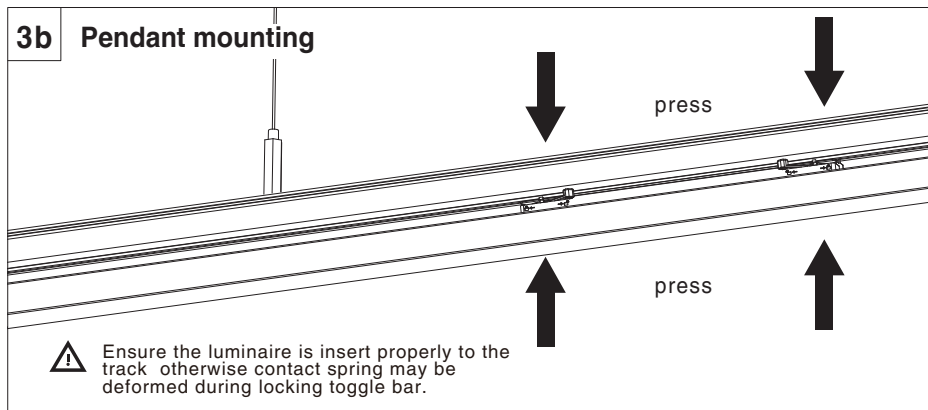
2



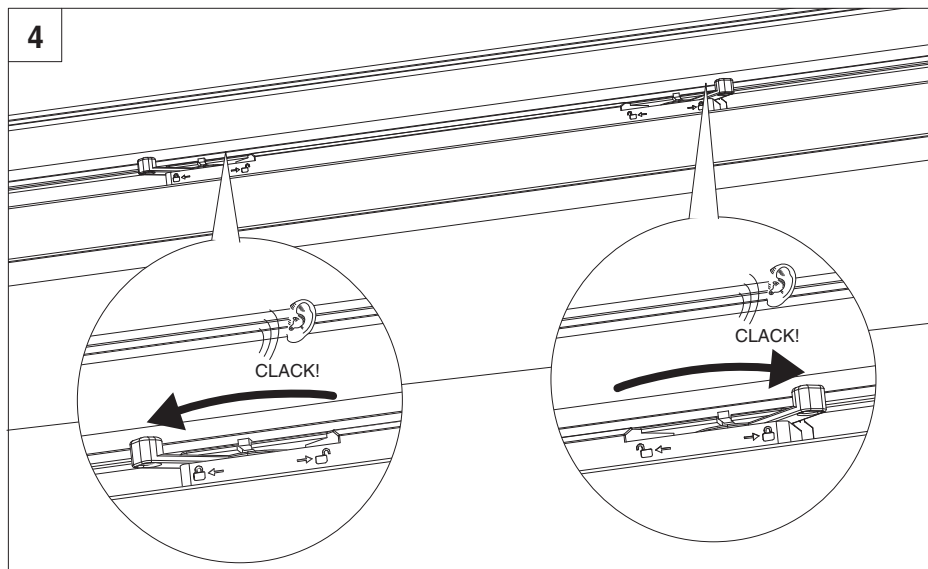
3a Surface mounting



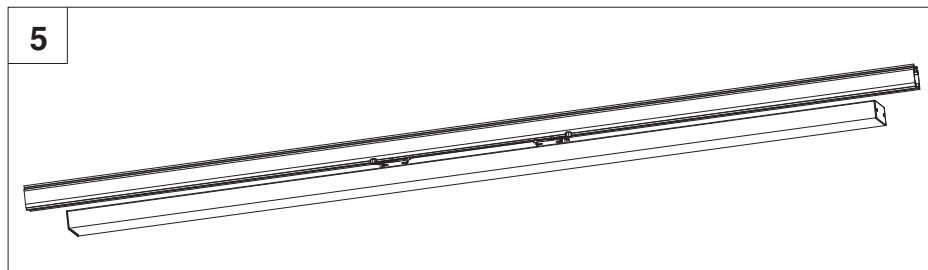
3b Pendant mounting



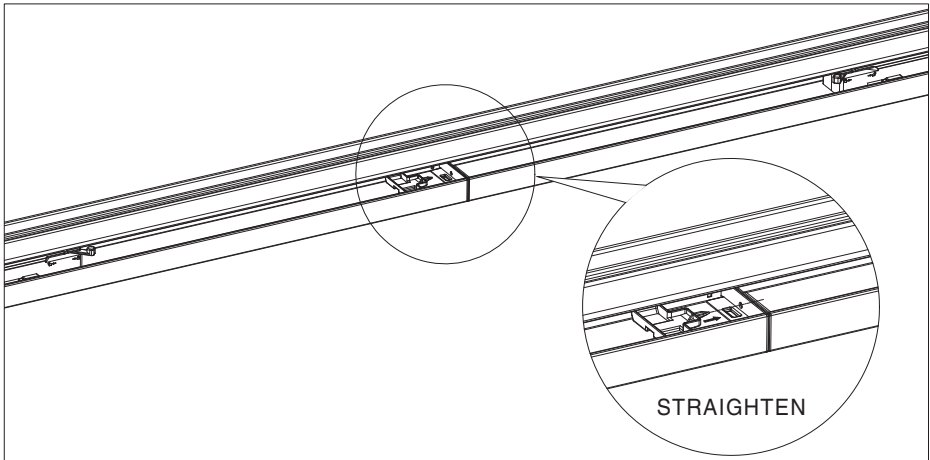
4



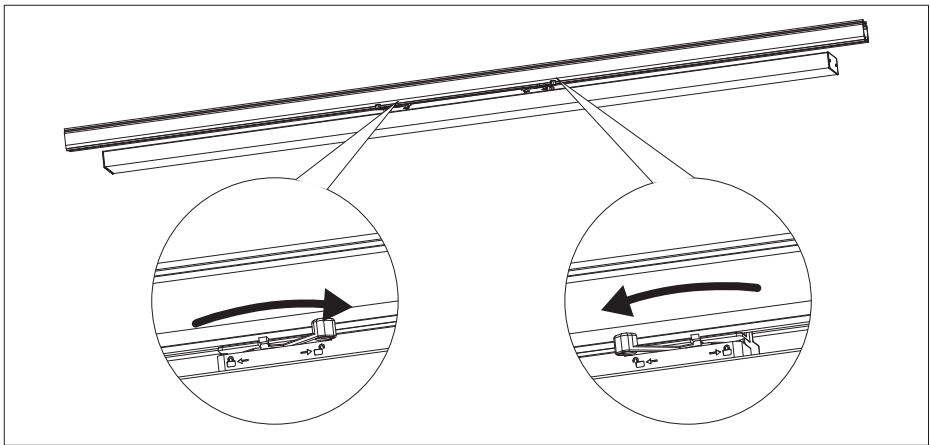
5



i Linkable



i Disassemble



Manufacturer

SELF ELECTRONICS CO., LTD.
Add: No. 1345 JuXian Road, Hi-Tech
Park, Ningbo, China 315103

Importer

SELF ELECTRONICS GERMANY GMBH
Add: August-Horch-Str. 7, 51149 Cologne
(For European market)

SELF ELECTRONICS USA CORP.
Add: 3264 Saturn Ct, Peachtree Corners,
GA 30092
(For North American market)

SELF LIGHTING TECHNOLOGY PTY., LTD.
Add: 31/3 Homelea Court, Rivervale, WA, 6103,
Australia
(For Oceanian market)

SELF ELECTRONICS MIDDLE EAST (SELF LIGHTING L.L.C)
Add: 1707, Opal Tower, Business Bay, Dubai
(For Middle Eastern market)