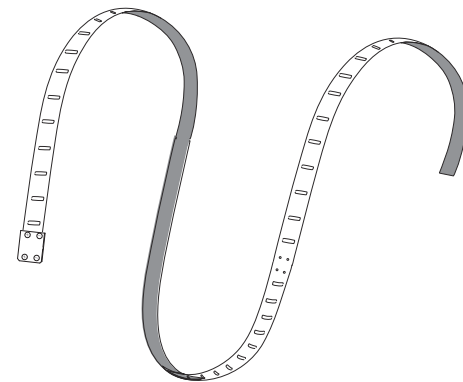


RIBBON2

FLEX2



INSTRUCTION MANUAL

SERIES: RIBBON2/FLEX2

Read these instructions completely and carefully.

⚠ ATTENTIONS

Read the instruction carefully before installation, non-observance of this instruction may cause damage to the fixture or hurt to human body. The installation must be carried out by a qualified electrician in accordance with local or national codes.
Cut off the power supply before installation and maintenance !
Regularly check the light source, the LED power supply, the cord and other accessories.
If any part is damaged, the product should not be used.
Keep this instruction manual handy for future use
The light source of these product are non-changeable light diodes(LED).
Do not disassemble the product, as the light diode can cause damage to the eyes.
The production is indoor use only, suitable for dry locations.

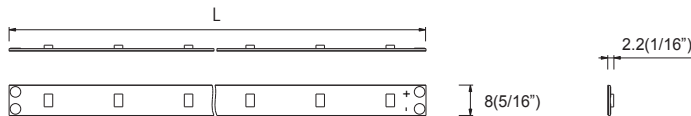
CAUTION: To reduce the risk of fire, do not install in a compartment smaller than L+1/2 inches by 9/16 inches by 9/16 inches.
AVERTISSEMENT: inches by 9/16 inches by 9/16 inches.

Afin d'éviter tout risques d'incendie, ne pas installer dans un compartiment plus petit que L+1/2 inch, par 9/16 inch, par 9/16 inch.

(L see formForm ①)

Use only with SELV power supply or Class 2 power supply (For USA market)

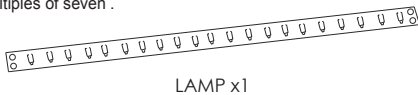
Dimensions: (mm/inches)



Form ①

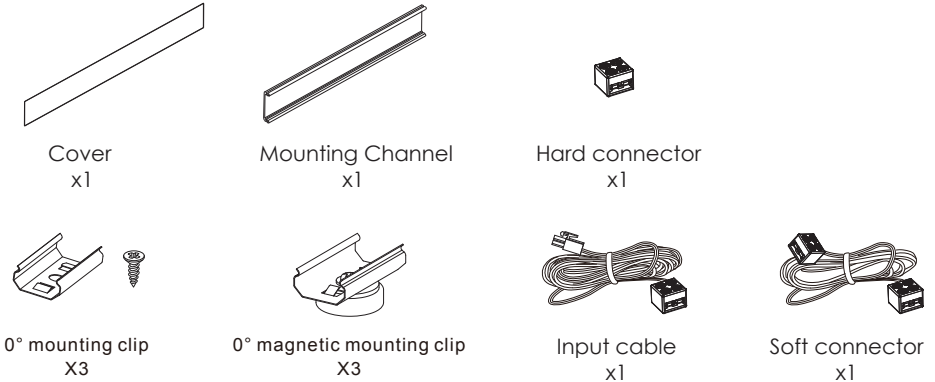
Model	Rated input	Power(w)	Length(L)	Minimum mounting space (L1xVxH)	ta
FLEX2-FX-24V	24VDC	0.143xX	Custom design 3-7/8"xX/7(100xX/7)	(L+1/2") x9/16"x9/16" (L+12)x15x15mm	-4~95°F (-20~35°C)
RIBBON2-FX-24V	24VDC	0.190xX	Custom design 3-7/8"xX/7(100xX/7)	(L+1/2") x9/16"x9/16" (L+12)x15x15mm	-4~95°F (-20~35°C)

* X: The quantity of LEDs, will be multiples of seven.

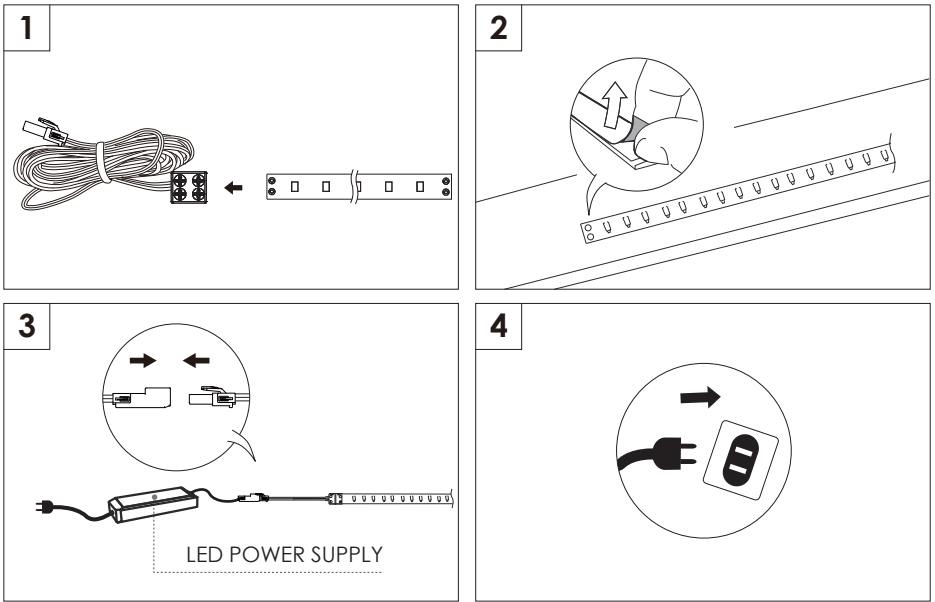


Components:

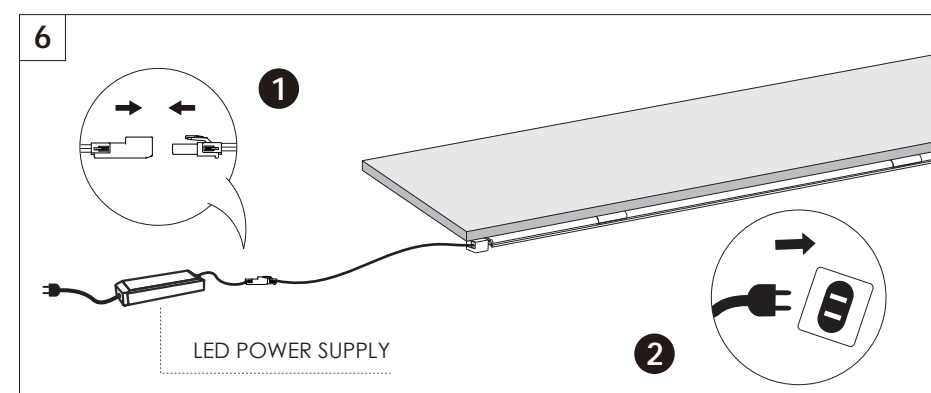
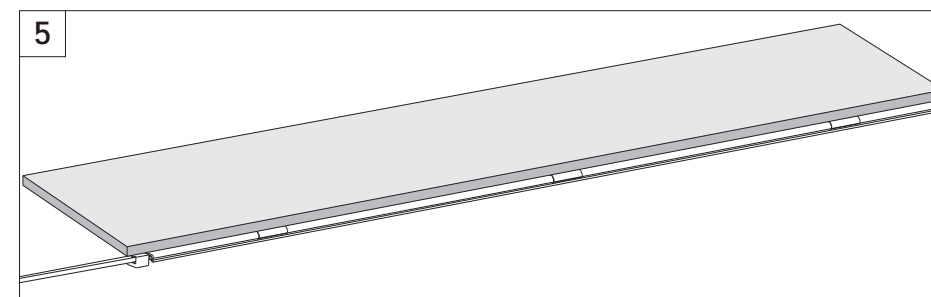
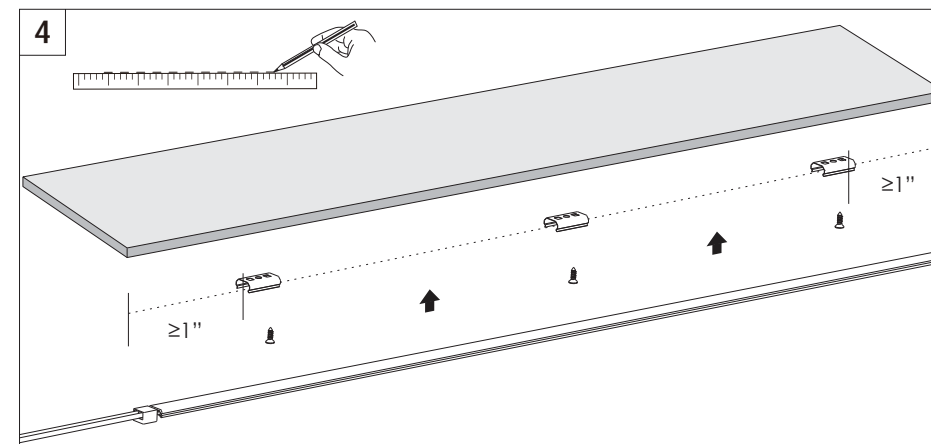
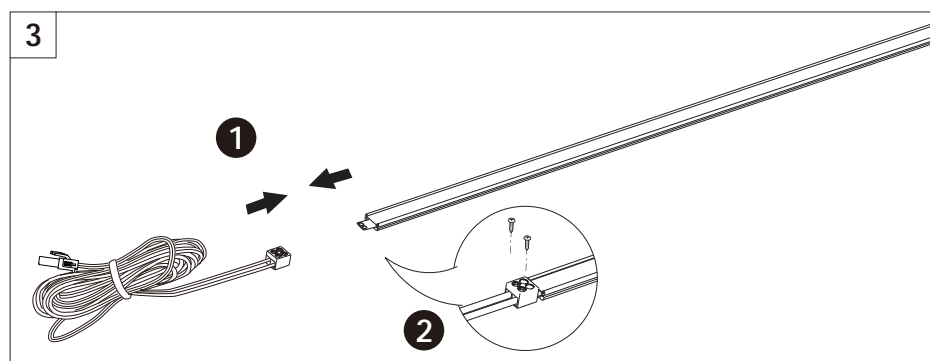
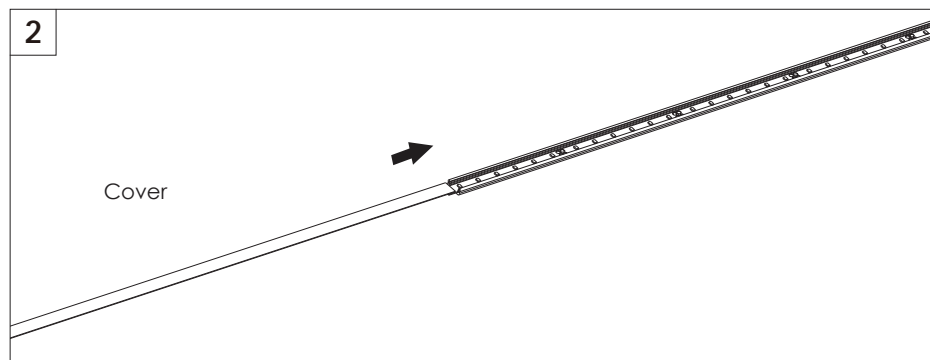
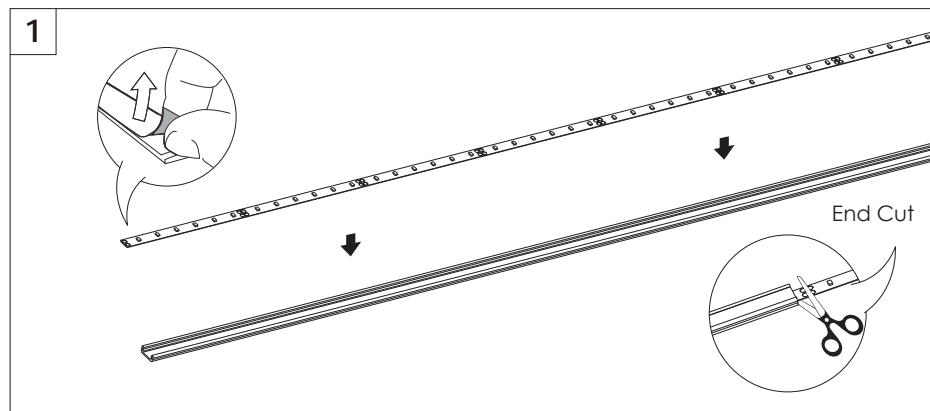
Optional



❗ Install LED fixtures directly:



i Install LED fixtures with mounting channel:



Wiring diagram:

