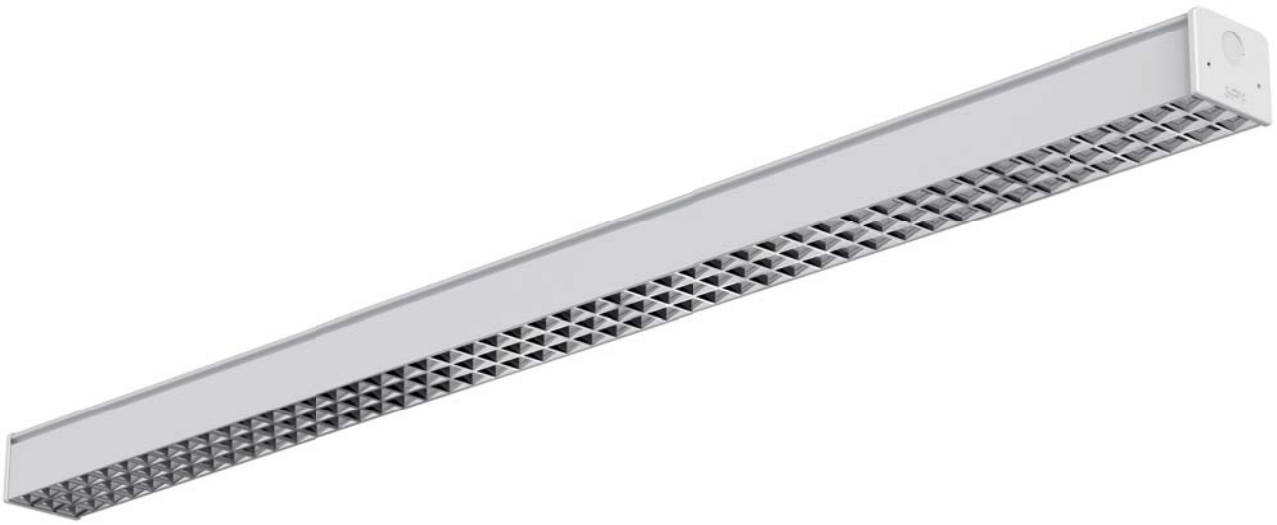


Ceiling Lighting PATH VISION



- Anti-glare is achieved through patented optical design
- Continuous run installation
- High efficacy, up to 160 lm/W

Ceiling Lighting

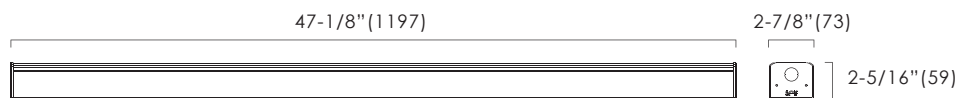
PATH VISION



- Anti-glare is achieved through patented optical design
- Tool-less slide-in structure for easy installation
- Continuous run installation
- Dimmable, 1-10V dimming to 10%-100%
- Max. linkable length: 224' per run @ 120VAC, 424' per run @ 277VAC
- Lifetime: 50,000hrs (Ta=95°F, 35°C)
- Ta: -4°F~95°F (-20°C~35°C)
- Material: Aluminum alloy
- 7W/ft, 1120lm/ft



Dimensions: inches, (mm)



How to order using our catalog numbers
Example: PATH VISION-4830K

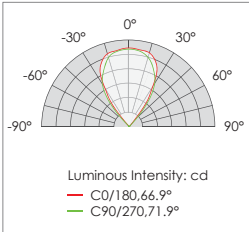
Series	Length	CCT (K)	Beam Angle	Finish	Installation
PATH VISION	48 - 47.2" (1200mm) 95 - 94.4" (2398mm)	30K - 3000K 40K - 4000K	[blank] - 70° × 70°	[blank] - Natural Aluminum	[blank] - Pendant

Specifications

Catalog No.	Model	Rated Input (VAC)	Ra	Power (W)	Luminous flux (TYP@4000K)lm
PATH VISION-4830K PATH VISION-4840K	PATH VISION-L144-277V	120-277	85	28	4480
PATH VISION-9530K PATH VISION-9540K	PATH VISION-L288-277V	120-277	85	56	8960


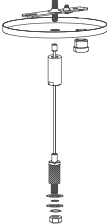


* Included: 1 pc LED fixture, 2 pcs mounting clips, 2 pcs end caps.
* 2 aircraft cables are needed for both 4' and 8' lighting fixture.

Photometrics



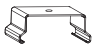
Ceiling Lighting

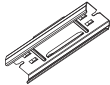
PATH2/PATH VISION

Accessories	Catalog No.	Description	Length	N.W. (lb)
	PFC15-PT	<div>  </div> <div>Power feed cord 12/3 SJT , including 10 pcs tie wraps</div>	15ft	
	PFA-PT	<div>  <div>X1</div> </div> <div>Power feed assembly, including cable coupler (threaded for 1/4-20 stud), cable holder with screw and washer, cable(15'), 1/4-20 hanger bolt, junction box cross bar and 5" ceiling plate canopy with opening in the ceiling plate for the power cord, without power cord</div>	15ft	
	ACP-PT	<div>  <div>X1</div> </div> <div>Aircraft cable pack, including cable coupler (threaded for 1/4-20 stud), cable holder with screw and washer, cable(15'), 1/4-20 hanger bolt, junction box cross bar and 5" ceiling plate canopy.</div>	15ft	
	AC15-PT	<div>  <div>X1</div> </div> <div>Aircraft cable without ceiling plate canopy</div>	15ft	

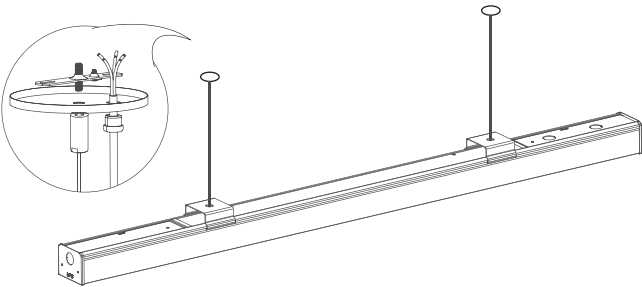
Ceiling Lighting

PATH2/PATH VISION

Accessories	Catalog No.	Description	Length (inch)	N.W. (lb)
	MC-PATH (included)	<div>  <div>X2</div> </div> <div>Mounting bracket</div>		

Accessories(optional)	Catalog No.	Description	Length (inch)	N.W. (lb)
	HC-PATH2	<div>  </div> <div>Hard Connector</div>		

Installation



Continuous run installation

