

INSTRUCTION MANUAL

SERIES: TINA

Read these instructions completely and carefully.

ATTENTIONS

RISK OF ELECTRIC SHOCK

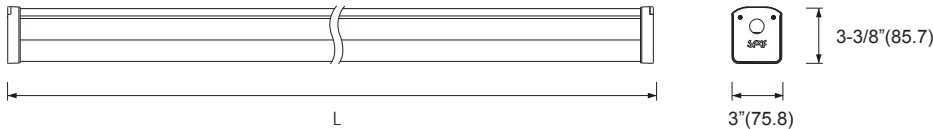
- Turn power off before inspection, installation or removal.
- Properly ground electrical enclosure.

RISK OF FIRE

- Follow all NEC and local codes.
 - Use only UL or IEC approved wire for input/output connections.
- Minimum size 18 AWG.
Ideal for walk-in coolers, parking garage.

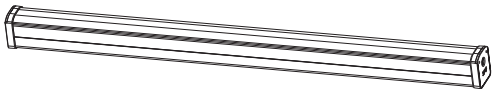
THIS PRODUCT MUST BE INSTALLED IN ACCORDANCE WITH THE APPLICABLE INSTALLATION CODE BY A PERSON FAMILIAR WITH THE CONSTRUCTION AND OPERATION OF THE PRODUCT AND THE HAZARDS INVOLVED

Dimensions: (inches/mm)



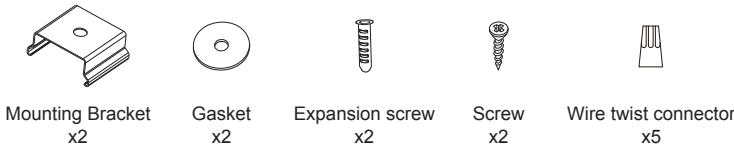
Specifications :

Mode	Length	Rated Input	Power	Max. Linkable No.	ta
TINA-L60-277V	23-5/8" (600)	120~277VAC	20W	76pcs @277V 36pcs @120V	-13°F~-122°F (-25°C~50°C)
TINA-L120-277V	47-1/8" (1197)	120~277VAC	40W	38pcs @277V 18pcs @120V	

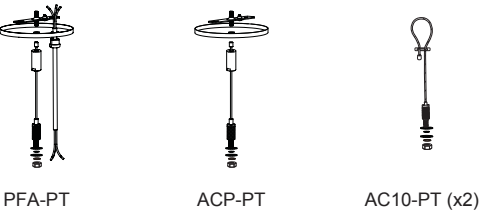


LAMP x1

Components:



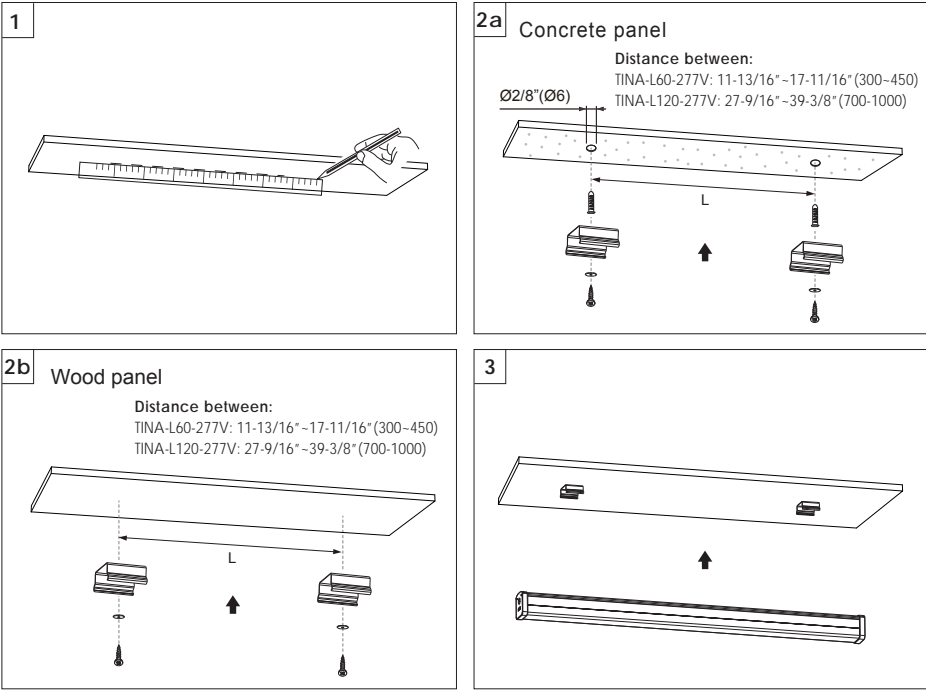
Optional:

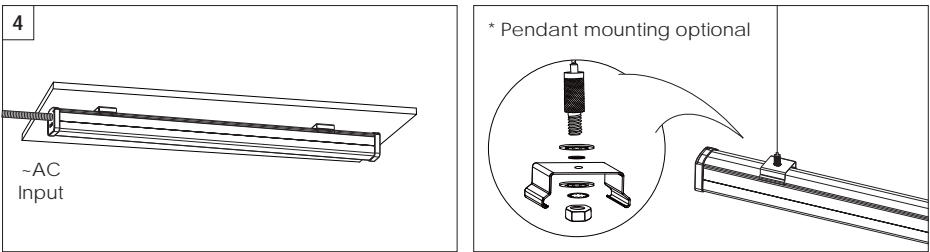


Tools



Installation:





Wiring diagram:

