

Instruction Manual

Series: LUCAS

Attentions:



Read the instruction carefully before installation. non-observance of this instruction may cause damage to the fixture or hurt to human body. The installation must be carried out by a qualified electrician in accordance with local or national codes. Cut off the power supply before installation and maintenance !

Regularly check the light source , the LED power supply, the cord and other accessories.
If any part is damaged, the product should not be used.

Keep this instruction manual handy for future use

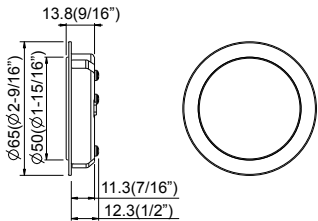
The light source of these product are non-changeable light diodes(LED).
Do not disassemble the product, as the light diode can cause damage to the eyes.
The production is only for indoor and dry location.

CAUTION: To reduce the risk of fire, do not install in a compartment smaller than 12 inches by 12 inches by 12 inches.

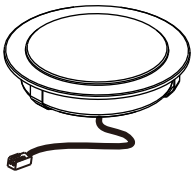
AVERTISSEMENT: Afin d'éviter tout risques d'incendie, ne pas installer dans un compartiment plus petit que 12 inch, par 12 inch, par 12 inch.

Use only with SELV power supply or Class 2 power supply (For USA market)

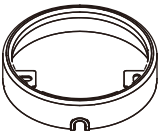
Dimension in mm(inch)



Model	Rated input	Power	ta
LUCAS-R24-24V	24VDC	3W	-20°C~35°C(-4°F~95°F)



1x

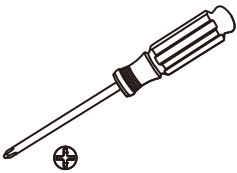


1x(Optional)



2x(Optional)

Tools



Screwdriver



Driller

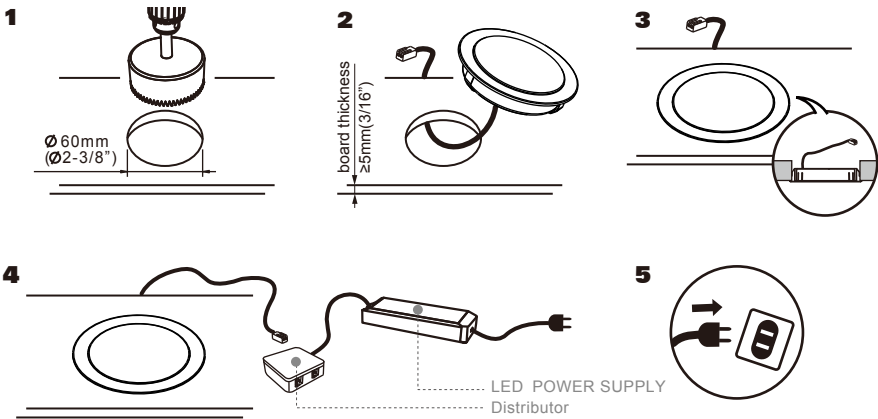


Ø 60mm
(Ø 2-3/8")
Hole opener



Ø 9-11mm
(Ø 3/8"-7/16")
Drill bit

Installation 1



Installation 2

