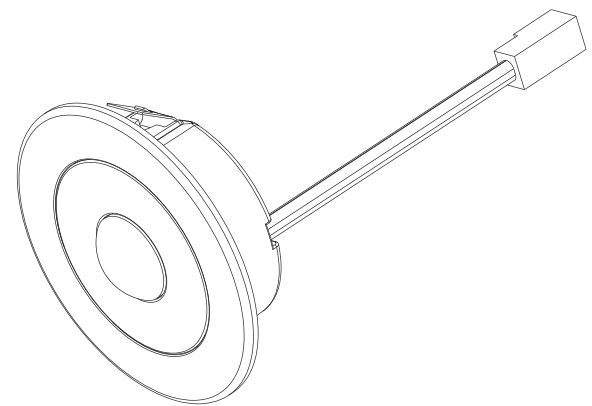


GLIM



SAIF

INSTRUCTION MANUAL

SERIES: GLIM

Read these instructions completely and carefully.

ATTENTIONS

Read the instruction carefully before installation, non-observance of this instruction may cause damage to the fixture or hurt to human body. The installation must be carried out by a qualified electrician in accordance with local or national codes.

Cut off the power supply before installation and maintenance !

Regularly check the light source, the LED power supply, the cord and other accessories.

If any part is damaged, the product should not be used.

Keep this instruction manual handy for future use

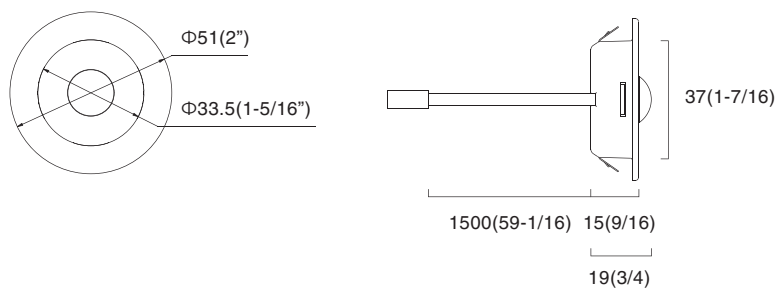
The light source of these product are non-changeable light diodes(LED).

Do not disassemble the product, as the light diode can cause damage to the eyes.

The production is only for indoor and dry location.

Use only with SELV power supply or Class 2 power supply (For USA market)

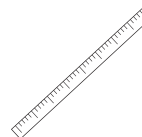
Dimensions: (mm/Inches)



Specifications :

Model	Rated Input	Power
GLIM-R8-24V	24VDC	0.3W

Tools:



Ruler



Pencil



Driller

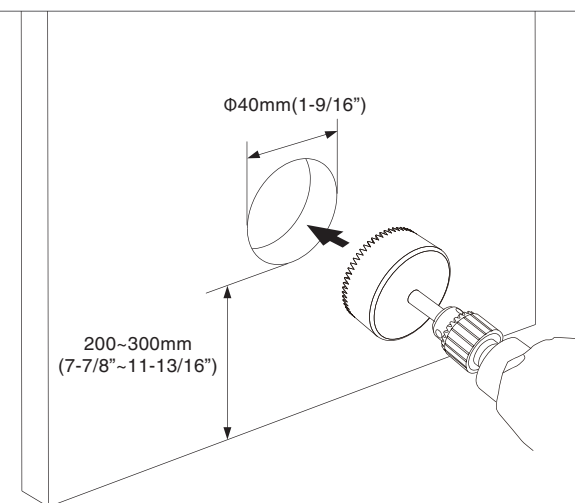
Φ40(1-9/16")
Hole opener

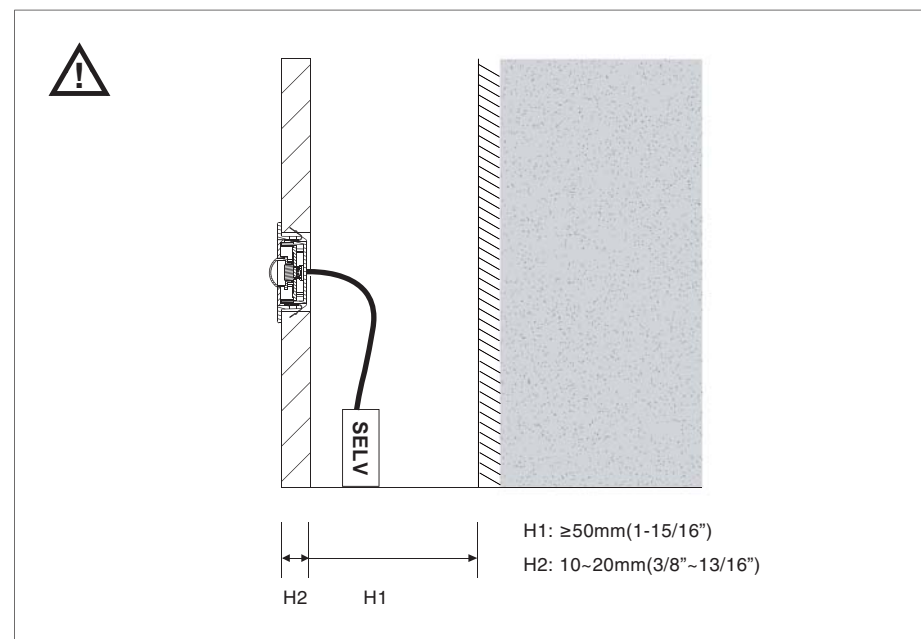
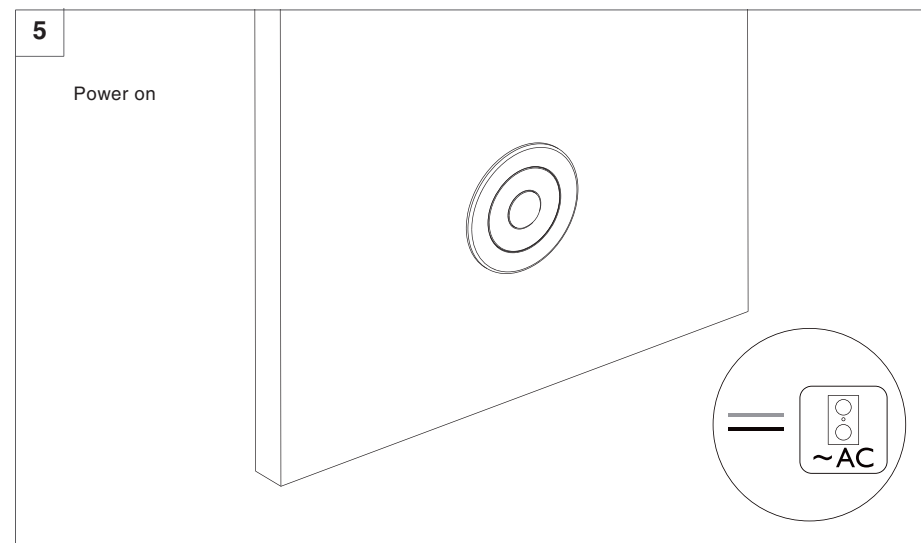
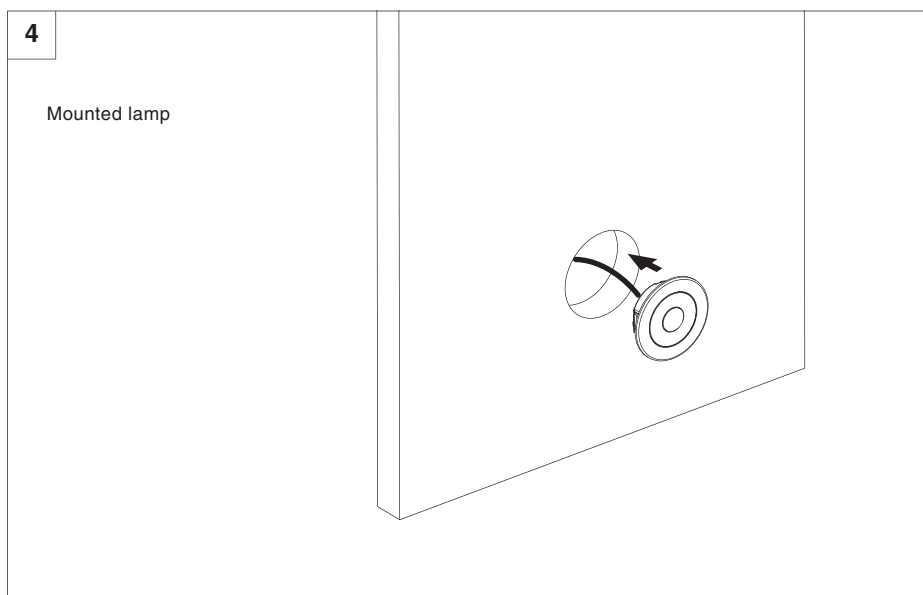
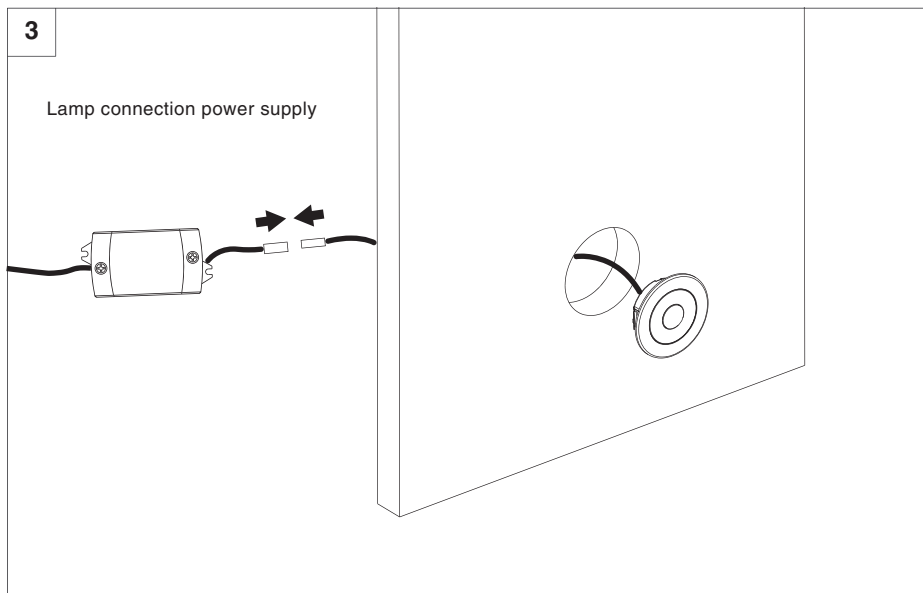
Installation

1



2





Functions:

