

Touchless controller

HZK221



Unit: inch/mm

Features

Infrared detection with two modes.

Memory function: Light will return to last setting before shut off.

Door mode

Opening the door switches the light on and closing the door switches it off.

ON/OFF and dim mode

After the controller detect the motion first time, it turns on the light, and the second time it turns off again.

When the controller detect the motion for more than 1s, it starts to dim from 100% to 5%, the second time, it brighten from 5% to 100%.

Installation

Recessed and surface mounted.

Tech Specs

Rated input voltage: 12/24V

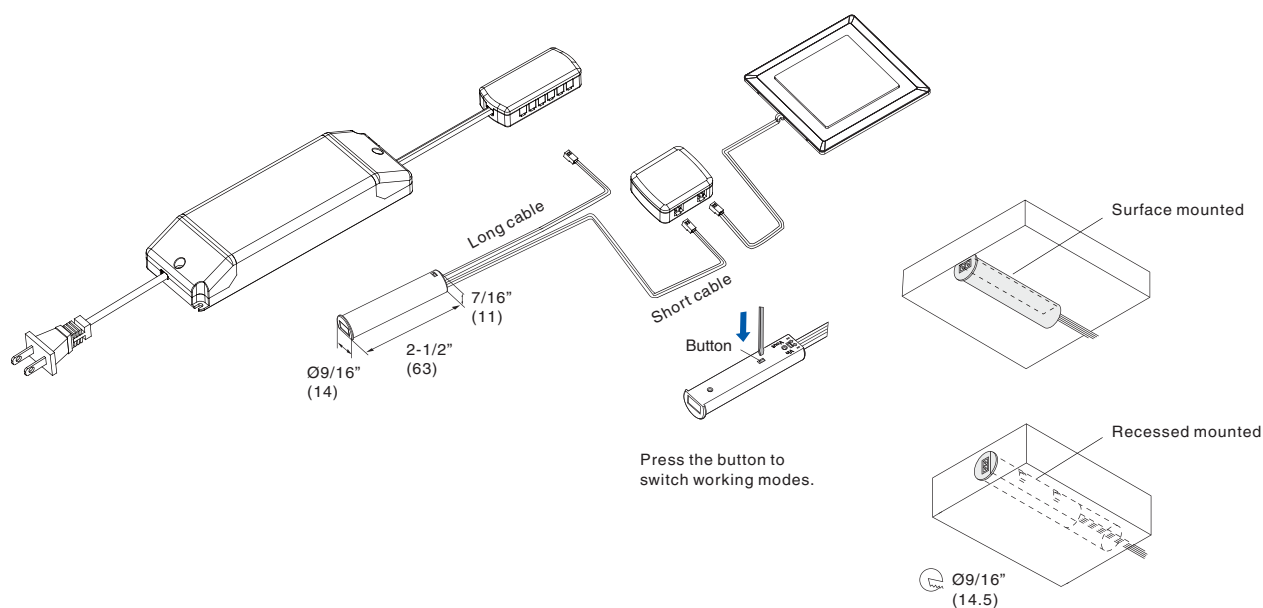
Rated output voltage: 12/24V

Rated load: 24/48W

Standby power: <0.2W

Detection range: less than 5cm(2") is recommended

Dimensions: 63x11x14mm(2-1/2"x7/16"x9/16")



Order information

Cat.No.	Type	Model	Description
HZK221	Controller	HZK221	Touchless controller
JB-4A-NC	Distributor	JB-4A	4 ways distributor without cable
NA159-4024LA-12A6	Power supply	SLT40-24VL-UN-A	40W constant voltage driver Input: 100-120VAC NA plug 1 + 59" cable. Output: 24VDC 12-way splitter JB-12A + 6" cable.