

SLPU-2P1U1C1S-WL-BK

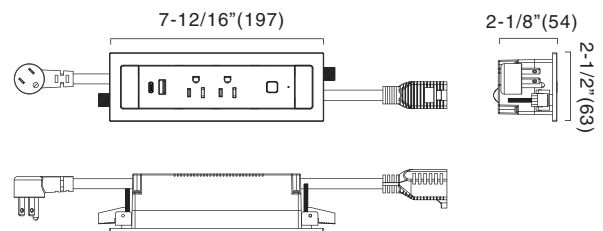


ELECTRICAL

With 1 × USB-A charger port (Rated 5Vdc, 3.1A)
 With 1 × USB-C charger port
 (Rated 5VDC 3.1A, 9VDC 2A, 12VDC 1.5A)
 USB charger built-in open circuit, short circuit, over load protection
 2 × TR AC Receptacles, rated 15A, 125Vac
 Wireless 3-way switching, controls the rear receptacle
 for LED light fixtures
 10' 14 AWG x 3C power cord with 5-15P plug
 8" rear/side exiting cord with receptacle



Dimension(inches/mm)



MECHANICAL

Recessed mounting



CERTIFICATION

FCC compliant and UL Listed



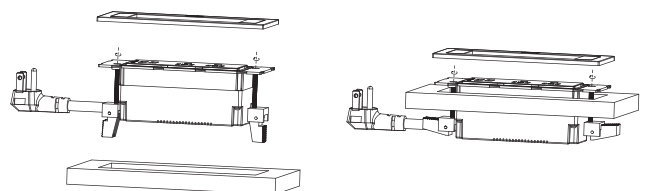
WARRANTY

5 Years



Installation

Cut hole size:
 7.40"×2.09"(188mm×53mm)

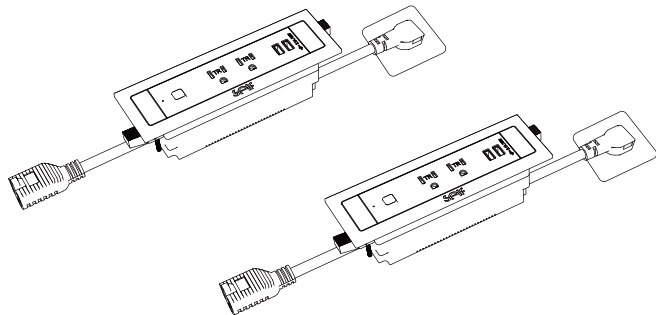


*Thickness of the board:8~35mm

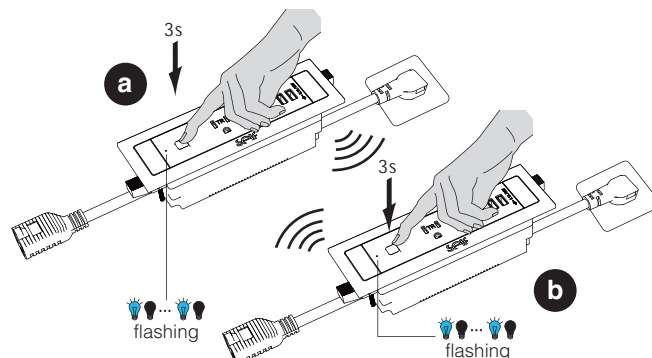
3-way Switching Function

i Pairing

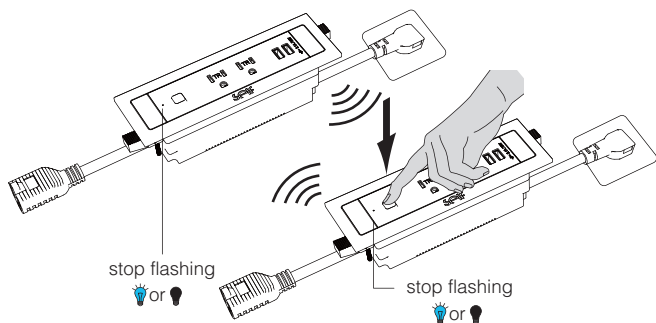
1 Power on



2 Press power unit's start button more than 3 seconds, the blue indicator beside button starts flashing. Power unit enters pairing mode. Repeat same operation to another power unit.



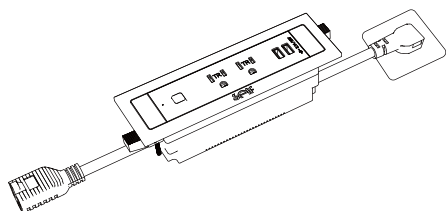
3 Short press the button of any power unit, the blue indicator will stop flashing and stay ON or OFF, means the pairing is successful.



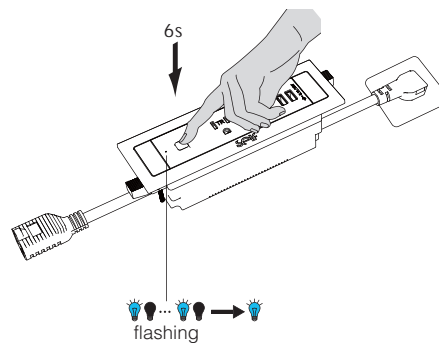
4 press any paired power unit's switch, all the lights that powered by paired power units can be controlled.

i Unpair for 3-way version power units

1 Power on



2 Press power unit's start button more than 6 seconds, until the blue indicator button starts flashing then stays ON, means the unpairing is successful.



SLPU-2P1U1C1S-WL-WH



ELECTRICAL

With 1 × USB-A charger port (Rated 5Vdc, 3.1A)
 With 1 × USB-C charger port
 (Rated 5VDC 3.1A, 9VDC 2A, 12VDC 1.5A)
 USB charger built-in open circuit, short circuit, over load protection
 2 × TR AC Receptacles, rated 15A, 125Vac
 Wireless 3-way switching, controls the rear receptacle
 for LED light fixtures
 10' 14 AWG x 3C power cord with 5-15P plug
 8" rear/side exiting cord with receptacle



MECHANICAL

Recessed mounting



CERTIFICATION

FCC compliant and UL Listed

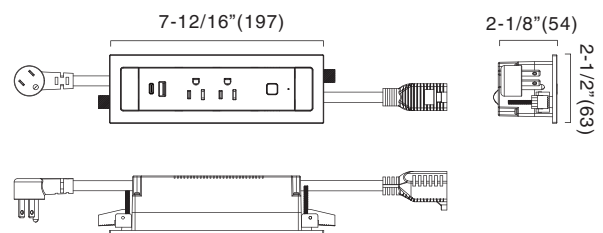


WARRANTY

5 Years

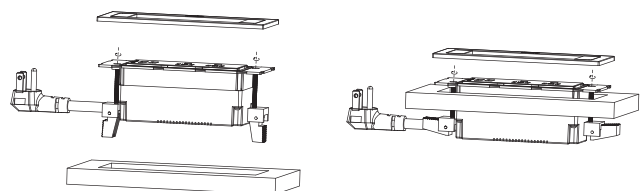


Dimension(inches/mm)



Installation

Cut hole size:
 7.40"×2.09"(188mm×53mm)

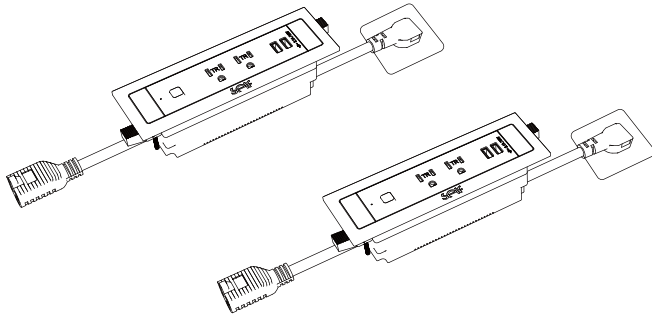


*Thickness of the board:8~35mm

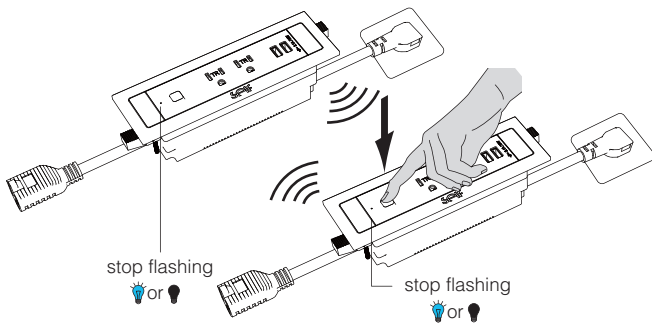
3-way Switching Function

i Pairing

1 Power on

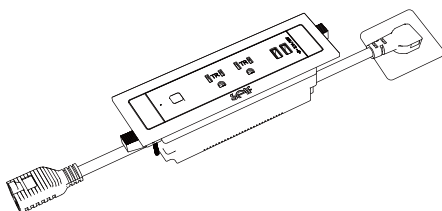


3 Short press the button of any power unit, the blue indicator will stop flashing and stay ON or OFF, means the pairing is successful.

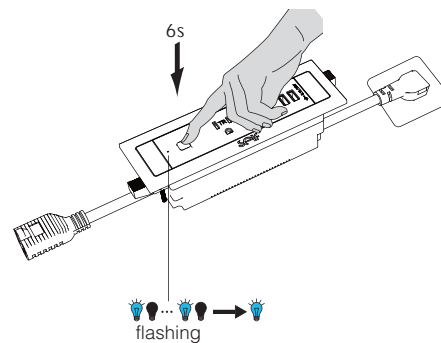


i Unpair for 3-way version power units

1 Power on



2 Press power unit's start button more than 6 seconds, until the blue indicator button starts flashing then stays ON, means the unpairing is successful.



SLPU-2P1U1C1S-WL-NI



ELECTRICAL

With 1 × USB-A charger port (Rated 5Vdc, 3.1A)
 With 1 × USB-C charger port
 (Rated 5VDC 3.1A, 9VDC 2A, 12VDC 1.5A)
 USB charger built-in open circuit, short circuit, over load protection
 2 × TR AC Receptacles, rated 15A, 125Vac
 Wireless 3-way switching, controls the rear receptacle
 for LED light fixtures
 10' 14 AWG x 3C power cord with 5-15P plug
 8" rear/side exiting cord with receptacle



MECHANICAL

Recessed mounting



CERTIFICATION

FCC compliant and UL Listed

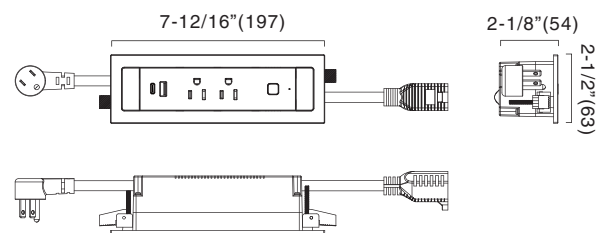


WARRANTY

5 Years

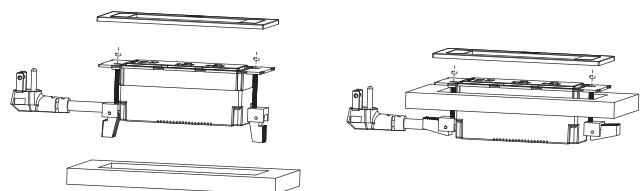


Dimension(inches/mm)



Installation

Cut hole size:
 7.40"×2.09"(188mm×53mm)

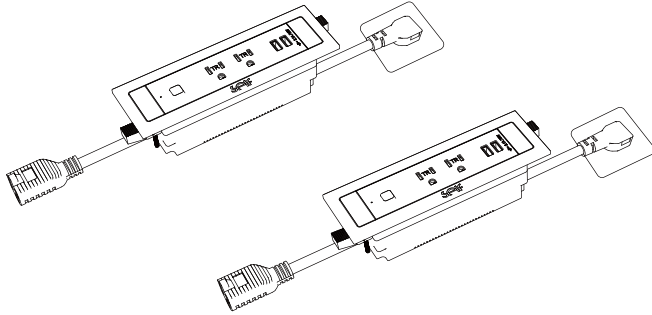


*Thickness of the board:8~35mm

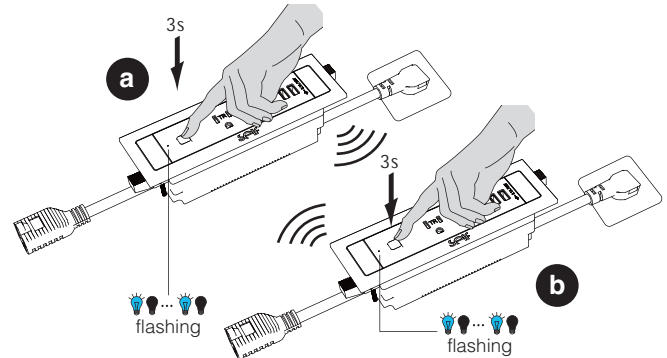
3-way Switching Function

i Pairing

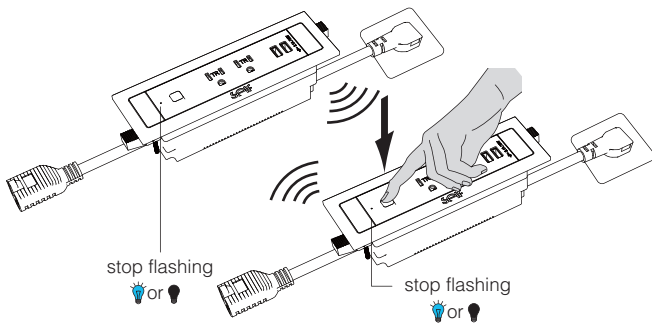
1 Power on



2 Press power unit's start button more than 3 seconds, the blue indicator beside button starts flashing. Power unit enters pairing mode. Repeat same operation to another power unit.



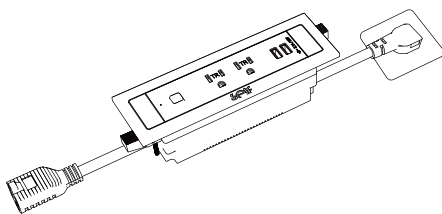
3 Short press the button of any power unit, the blue indicator will stop flashing and stay ON or OFF, means the pairing is successful.



4 press any paired power unit's switch, all the lights that powered by paired power units can be controlled.

i Unpair for 3-way version power units

1 Power on



2 Press power unit's start button more than 6 seconds, until the blue indicator button starts flashing then stays ON, means the unpairing is successful.

